

# District

see  
2016-2017  
NAP  
on page  
7

# TABLE

Tidbide  
Locating Games  
Winners  
Analysis

## 2016-2017 North American Pairs

4 Pairs Qualify in the O-2500 & NLM!  
(3 in the Open)

SPLIT SITE FINALS for O-2500 & NLM!

There's still time to qualify for the North American Pairs, a North American Championship that begins in your club and concludes at the Spring 2017 NABC in Kansas City, Missouri.

WWW

## **District 6 TableTALK**

### **EDITORIAL BOARD**

**Bill Cole, PUBLISHER**  
**Donna Rogall, CREATIVE DIRECTOR, EDITOR**  
**Lucy McCoy, MANAGING EDITOR**  
**Steve Robinson, CIRCULATION MANAGER**  
**Ellen Cherniavsky, MAILING LIST**

**CONTRIBUTING EDITORS:**  
**Barbara Doran, Margot Hennings**

**COLUMNISTS:**  
**Steve Robinson, Shawn Stringer,**  
**Margot Hennings, Lynn Jones, Barbara**  
**Doran, Vince Wilmot**

### **DISTRICT SIX OFFICERS**

**ACBL District 6 Director:**

**Margot Hennings**  
**Margot10bridge@cox.net**

**President: Shawn Stringer**  
**shstringer@aol.com**

**Vice President: Richard Deyerle**  
**rickdey\_49@hotmail.com**

**Secretary: Susan B. MacLaughlin**  
**sbmak121@comcast.net**

**Treasurer: Ron Spieker**  
**tip001@verizon.net**

**Immediate Past President: Don Berman**  
**don.berman@verizon.net**

### **UNIT PRESIDENTS**

**Unit 109: Richmond: Harry Gellis**  
**hpgellis@yahoo.com**

**Unit 110: Peninsula: Ron Alldaffer**  
**balldaffer@charter.net**

**Unit 135: Maryland: Ron Conlon**  
**rjconlon@hotmail.com**

**Unit 139: Piedmont: David Butler**  
**dbutler934@aol.com**

**Unit 146: VA State: Brian Boyce**  
**brian@bfboyce.com**

**Unit 147: Wash. DC: Ellen Cherniavsky**  
**eachernia@yahoo.com**

**Unit 218: Northern Va: Ron Kral**  
**RonKral@gmail.com**

**Unit 231: SW Virginia: Rich Rio**  
**richrio428@yahoo.com**

*Send comments or inquiries to Lucy McCoy,  
Managing Editor at [lucymccoy@verizon.net](mailto:lucymccoy@verizon.net)*

Any requests for changes to  
the mailing list must be sent  
directly to the ACBL at:

• [AddressChange@ACBL.org](mailto:AddressChange@ACBL.org)

# **DISTRICT** **6** **Table**

## **PRESIDENT'S MESSAGE—Give Us a Hand When You Can**

At the Raleigh Regional in May, ACBL District 6 (D6) Director Margot Hennings and I represented D6 in meetings with District 7 and Mid-Atlantic Bridge Conference officers. A key result of those meetings was the cessation of shared ownership of vast amounts of bridge equipment and transfer of ownership directly to the districts. That decision, coupled with the retirement of long-time tournament director Doug Grove, who had managed supplies and equipment for decades, created the need for a new model going forward.

Equipping our bridge events requires a tremendous amount of thought, planning and effort. Consider that a typical regional uses about 3 tons of "stuff," including bid boxes (500 lbs.), boards (900 lbs.), Bridgemates (100 lbs.), and table mats (60 lbs.). Scoresheets alone weigh 125 lbs., and they are but one of a dozen types of consumable paper we use. Add in the tables (3400 lbs.) and signs, stanchions, supports, racks, computers, printers and all sorts of office equipment and you get a better picture of what supplying a tournament involves.

In addition to regionals, D6 equipment is used at more than 30 sectionals each year as well as at Grand National Teams and North American Pairs events. Equipment has to be moved at least four times per event – storage to car to site, and then site to car and back to storage. You can do the math on total tons moved, but suffice it to say that our events require significant logistical planning and even more significant manpower.

District 6 has already started to improve our equipment. Over 1,000 bid boxes have been emptied, run through the dishwasher, and the inserts replaced or rejuvenated. We are labeling Bridgemates and board sets, which will make future inventorying and tracking more efficient. D6 Board member and Unit 139 President David Butler maintains table counts for all sectionals by day, which helps with supply and equipment planning.

The District needs more players to pitch in. Many jobs, such as tracking inventory, can be done at your convenience. Event planning can be done by email.

Extra hands at the end of an event mean that the hardest working volunteers & directors can get home a bit sooner. We appreciate it when you close your bid box, & hope that next time you will help load a bin or two.

We have some of the lowest sectional and regional tournament entry fees in the country, and they have stayed low mainly because so much of the work is done by volunteers. We can minimize fee increases only if we expand our volunteer base. Tournament organizers will appreciate any assistance you can provide.

—Shawn Stringer,

301-275-6363, [shstringer@aol.com](mailto:shstringer@aol.com)

TO GET ON AN EMAIL LIST FOR **BRIDGE NEWS & BRIDGE PROBLEMS**, SEND A  
NOTE REQUESTING SUCH TO STEVE ROBINSON AT [ROBINSWR1941@GMAIL.COM](mailto:ROBINSWR1941@GMAIL.COM)



## **T**idbids

page

### **District 6 President's**

**Message** . . . inside cover  
Shawn Stringer

### **D7 Regional: Atlanta, GA**

Aug 30-Sep 5 . . . . .2

### **D7 Regional: Charlotte, NC**

Oct 24-30 . . . . .4

### **D4 Regional: Lancaster, PA**

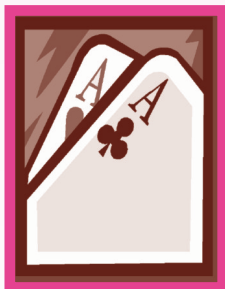
Oct 31-Nov 6 . . . . .6

### **District 6 STaCs:**

Nov 7-13, Dec 12-18, &  
Jan 10-16 . . . . .12

### **1-Year District 6**

**Calendar of Events** . .20



## **A**ce Analyses

page

### **2016-17 North American**

**Pairs**—4 Pairs Qualify in  
the 0-2500 & NLM! (3 in  
the Open) . . . . .7

### **Retrospective on Reno and**

**Deliberations in DC**  
from District Director  
Margot Hennings . . . . .11



## Locating Games

### **REGIONALS** page

#### **Hunt Valley, MD**

Aug 14-21 . . . . .3

#### **Norfolk, VA**

Nov 14-20 . . . . .5

### **SECTIONALS**

#### **Norfolk/Va Beach, VA NLM**

Aug 27-28 . . . . .7

#### **Fairfax, VA**

Sep 8-11 . . . . .8

#### **Norfolk/Va Beach, VA**

Sep 16-18 . . . . .9

#### **Baltimore, MD**

Sep 30-Oct 2 . . . . .10

#### **Williamsburg, VA**

Sep 30-Oct 2 . . . . .11

#### **Silver Spring, MD**

Oct 6-9 . . . . .12

#### **Richmond, VA**

Oct 14-16 . . . . .13

#### **Salisbury, MD I/N**

Oct 14-15 . . . . .14

#### **Fairfax, VA**

Oct 20-23 . . . . .15

#### **Charlottesville, VA**

Dec 9-11 . . . . .16

#### **Silver Spring, MD**

Jan 5-8 . . . . .17

#### **Norfolk/Va Beach, VA**

Jan 6-8 . . . . .18

#### **Richmond, VA**

Jan 20-22 . . . . .19

#### **Baltimore, MD**

Feb 3-5 . . . . .20



## Keeping Winners

page

### **Reno, NV NABC**

D6 National Winners . . .8

### **2015-16 Grand National**

**Teams** —District 6 Open,  
B, and C Bracket  
Winners . . . . .back cover

### **District 6 TableTALK**

(ISSN#1543-3978)

TableTALK cannot guarantee  
postal delivery. If you miss an  
issue, please see:

[www.districtsix.org](http://www.districtsix.org)  
[www.mabcbridge.org](http://www.mabcbridge.org)  
or [www.acbl.org](http://www.acbl.org)

for tournament information.

# ATLANTA, GA MID-ATLANTIC REGIONAL

## Crowne Plaza at Ravinia at Perimeter Mall

4355 Ashford Dunwoody Road, Atlanta, GA 30346

Call **(770) 395-7700** by **August 1** for the bridge rate of \$117 plus tax (available starting Aug. 29), across the street from Perimeter Mall, free parking, health club, lighted tennis court, jogging trails, convenient shopping and dining

# Labor Day in Atlanta!

• PARTNERSHIP DESK

OPEN ONE HOUR BEFORE GAME TIME • REVAMPED SCHEDULE: 10 AM STARTS FOR PRIMETIME EVENTS WED. THROUGH MON. • HOSPITALITY AIN THE PLAYING AREAS; NON-SMOKING HOSPITALITY SUITES • FIVE DAYS OF MID-FLIGHT (0-3000 MP) GAMES! • DAILY BULLETINS, OVERALL AND SECTION TOP AWARDS

## TUESDAY, AUGUST 30

Lou Bluhm Open Knockout	1:30 & 7:30
<i>Seeded; Continues 10:00 &amp; 2:30 until complete</i>	
Lou Bluhm Bracketed KO (0-7500)	1:30 & 7:30
<i>Continues 10:00 &amp; 2:30 Wednesday</i>	
Open Pairs (1500/3000/3000+)	1:30 & 7:30
<b>GOLD RUSH</b> Pairs	1:30 & 7:30
Olympic Side Series (1st, 2nd of 4)	1:30 / 7:30
49er and 499er Pairs	1:30 / 7:30
Stratified Board-a-Match Teams	7:30
499er Swiss Teams	7:30
<i>Aft. pair games benefit ACBL Ed Foundation</i>	
<i>Eve. pair games benefit Atlanta Junior Bridge</i>	

## WEDNESDAY, AUGUST 31

**0-5 MP players play free today**

Nadine Wood Bracketed Knockout	10:00 & 2:30
<i>Continues 10:00 &amp; 2:30 Thursday</i>	
A/X Pairs	10:00 & 2:30
Mid-flight Pairs (0-3000)	10:00 & 2:30
<b>GOLD RUSH</b> Pairs (0-750)	10:00 & 2:30
Olympic Side Series (3rd, 4th of 4)	10:00 / 2:30
0-5 Trophy Pairs (single sessions)	10:00 / 2:30
49er and 499er Pairs	10:00 / 2:30 / 7:30
Stratified Board-a-Match Teams	2:30
Falcons Bracketed Knockout	7:30
<i>Continues 7:30 Thursday and Friday</i>	
Evening Side Game Series (1st of 5)	7:30
499er Swiss Teams	7:30

## THURSDAY, SEPTEMBER 1

Barb Borah Bracketed Knockout	10:00 & 2:30
<i>Continues 10:00 &amp; 2:30 Friday</i>	
A/X Pairs	10:00 & 2:30
Mid-flight Pairs (0-3000)	10:00 & 2:30
<b>GOLD RUSH</b> Pairs (0-750)	10:00 & 2:30
Billy Woodson Side Series (1st, 2nd of 4)	10:00 / 2:30
49er and 499er Pairs	10:00 / 2:30 / 7:30
Strati-flighted Swiss Teams	2:30

**Overflow Hotel: Atlanta Marriott Perimeter Center** 246 Perimeter Center Pkwy NE, (770) 394-6500, (800) 228-9290; \$117+ tax and \$5 parking, 10-15 minute walk from Crowne Plaza

Two-night Open Pairs (1500/3000/3000+)	7:30
Two-night <b>GOLD RUSH</b> Pairs (0-750)	7:30
<i>Two-night events continue 7:30 Friday</i>	
Evening Side Game Series (2nd of 5)	7:30
Stratified Board-a-Match Teams	7:30
499er Bracketed Pairs	7:30
<i>Pair game with computer-assigned BAM teammates</i>	

## FRIDAY, SEPTEMBER 2 - GOODWILL DAY

Morrill Hall Bracketed Knockout	10:00 & 2:30
<i>Continues 10:00 &amp; 2:30 Saturday</i>	
A/X/Y Swiss (4000/6000/6000+)	10:00 & 2:30
Bracketed Flight B Teams (0-3000)	10:00 & 2:30
<i>Three teams in each bracket win gold</i>	
Stratified Open Pairs	10:00 & 2:30
Billy Woodson Side Series (3rd, 4th of 4)	10:00 / 2:30
49er and 499er Pairs	10:00 / 2:30 / 7:30
Stratified Board-a-Match Teams	2:30
Bruce Reeve Bracketed Knockout	7:30
<i>Continues 7:30 Sat &amp; Sun</i>	
Evening Side Game Series (3rd of 5)	7:30
499er Swiss Teams	7:30

## SATURDAY, SEPTEMBER 3

Youth Pairs - Free	10:00
Dickie Freeman Bracketed Knockout	10:00 & 2:30
<i>Continues 10:00 &amp; 2:30 Sunday</i>	
A/X Pairs	10:00 & 2:30
Mid-flight Pairs (0-3000)	10:00 & 2:30
<b>GOLD RUSH</b> Pairs (0-750)	10:00 & 2:30
Peachtree Side Series (1st, 2nd of 6)	10:00 / 2:30
49er and 499er Pairs	10:00 / 2:30 / 7:30

• STRATS DETERMINED BY MP AVERAGES, BUT NO PLAYER MAY EXCEED EVENT'S LIMIT • ALL KOs (EXCEPT LOU BLUHM OPEN KO) ARE BRACKETED, RANDOM DRAW, AND INCLUDE 0-500 PLAYERS. ONE- AND TWO-BRACKET KNOCKOUTS ARE HANDICAPPED • OPEN EVENTS, INCLUDING SIDE SERIES, ARE STRATIFIED 0-750, 750-3000, 3000+ UNLESS OTHERWISE NOTED • A/X STRATS: 5000/5000+ • MID-FLIGHT STRATS: 1500/3000 • GOLD RUSH STRATS: 300/750 (GOLD POINTS FOR 750 STRAT OVERALLS AND SECTION TOPS); RED POINTS TO 0-300 STRAT • STRATI-FLIGHTED EVENTS: A/B/C 3000/5000/5000+ SEPARATE FROM D/E/F 500/1000/2000 • UNDER 500 MP GAMES STRATIFIED AT DIRECTOR'S DISCRETION • SINGLE-SESSION PAIRS ALWAYS ACCOMMODATED

Strati-flighted Swiss Teams	2:30
Two-night Open Swiss (1500/3000/3000+)	7:30
Two-night <b>GOLD RUSH</b> Swiss Teams (0-750)	7:30
<i>Two-night events continue 7:30 Sunday</i>	
Evening Side Game Series (4th of 5)	7:30
499er Swiss Teams	7:30

## SUNDAY, SEPTEMBER 4

Strati-flighted Swiss Teams	10:00
A/X Pairs	10:00 & 2:30
Mid-flight Pairs (0-3000)	10:00 & 2:30
<b>GOLD RUSH</b> Pairs (0-750)	10:00 & 2:30
Strati-flighted Swiss Teams	2:30
Peachtree Side Series (3rd, 4th of 6)	10:00 / 2:30
49er and 499er Pairs	10:00 / 2:30 / 7:30
Evening Side Game Series (5th of 5)	7:30
Stratified Swiss Teams	7:30
499er Swiss Teams	7:30

## MONDAY, SEPTEMBER 5

A/X Swiss Teams	10:00 & TBA
Mid-Flight Swiss Teams (0-3000)	10:00 & TBA
<b>GOLD RUSH</b> Swiss Teams (0-750)	10:00 & TBA
Peachtree Side Series (5th, 6th of 6)	10:00 / 2:00
49er and 499er Pairs	10:00 / 2:00
499er Swiss Teams	10:00 / 2:00

## Renowned MABC Non-Life Master Program

Expert Lectures Tuesday through Saturday

## Eight GOLD RUSH Events in Six Days

for 0-750 planers

## TOURNAMENT CO-CHAIRS

**Jack Feagin**, jfeagin2@gmail.com, 404-252-9246

**Joe Sherwood**, josephsherwood@gmail.com, 404-259-5326

## PARTNERSHIPS

**Bill Kulbersh**, drbill49@bellsouth.net

**Carey Snider**, careybridge@bellsouth.net

DISTRICT 7 ON THE WEB: [WWW.DISTRICT7BRIDGE.ORG](http://WWW.DISTRICT7BRIDGE.ORG)

# BALTIMORE, MD MID-ATLANTIC REGIONAL

ALL KO (KO) EVENTS ARE BRACKETED, RANDOM DRAW & INCLUDE 0-300 PLAYERS; 1- & 2-BRACKET KOs ARE HANDICAPPED

## MONDAY, AUGUST 15

Kickoff KO ..... 1 & 7  
CONTINUES 1 & 7 TUESDAY

Open Pairs 1500/3000/3000+ ..... 1 & 7  
Race Horse **GOLD RUSH** Pairs ..... 1 & 7  
Fox Hunt Side Series (1st, 2nd of 4) 1 / 7  
I/N Pairs 5/20/50 & 100/300/500 ..... 1 / 7  
Educational Foundation Swiss Teams ..... 7  
AFTERNOON GAMES BENEFIT ACBL Ed. FOUNDATION; EVENING GAMES BENEFIT LOCAL CHARITY

## TUESDAY, AUGUST 16

0-5 MP PLAYERS **FREE** TODAY

Fort McHenry Compact KO ..... 9  
Two 12-BOARD MATCHES; CONTINUES 9 AM WED  
Ravens Morning Side Series (1st of 5) ..... 9  
I/N Pairs 5/20/50 & 100/300/500 9 / 1 / 7  
0-5 Trophy Pairs ..... 1  
Stratified Swiss Teams ..... 10:30 & 3  
Terrapin KO ..... 1 & 7  
CONTINUES 1 & 7 WEDNESDAY

Open Pairs 1500/3000/3000+ ..... 1 & 7  
Steeplechase **GOLD RUSH** Pairs ..... 1 & 7  
Fox Hunt Side Series (3rd, 4th of 4) 1 / 7  
Stratified Swiss Teams ..... 7  
I/N Swiss Teams 100/300/500 ..... 7

## WEDNESDAY, AUGUST 17

Preakness Compact KO ..... 9  
Two 12-BOARD MATCHES; CONTINUES 9 AM THURS  
Ravens Morning Side Series (2nd of 5) ..... 9  
I/N Pairs 5/20/50 & 100/300/500 9 / 1 / 7  
Daylight Open Pairs ..... 10:30 & 3  
Maryland KO ..... 1 & 7  
CONTINUES 1 & 7 THURSDAY

Open Pairs 1500/3000/3000+ ..... 1 & 7  
Pimlico **GOLD RUSH** Pairs ..... 1 & 7  
Hunt Valley Side Series (1st, 2nd of 4) 1 / 7  
Stratified Board-a-Match Teams ..... 7  
I/N Swiss Teams 100/300/500 ..... 7

## THURSDAY, AUGUST 18

Inner Harbor Compact KO ..... 9  
Two 12-BOARD MATCHES; CONTINUES 9 AM FRI  
Ravens Morning Side Series (3rd of 5) ..... 9  
I/N Pairs 5/20/50 & 100/300/500 9 / 1 / 7  
Daylight Open Pairs ..... 10:30 & 3  
A/X Swiss Teams (0-5000, 5000+) ..... 1 & 7  
Bracketed Flight B Swiss Teams  
(0-3000) ..... 1 & 7  
8 TEAMS PER BRACKET; 3 IN EACH BRACKET WIN GOLD  
Stratified Open Pairs ..... 1 & 7  
Hunt Valley Side Series (3rd, 4th of 4) 1 / 7  
Stratified Swiss Teams ..... 7  
I/N Swiss Teams 100/300/500 ..... 7

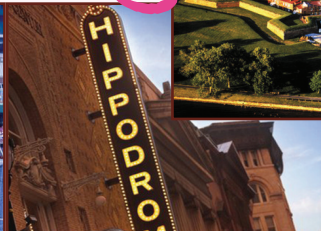


## HUNT VALLEY INN

WYNDHAM GRAND

245 SHAWAN ROAD, HUNT VALLEY, MARYLAND 21031

*Picturesque Countryside and the*



Charm of Baltimore

## FRIDAY, AUGUST 19

National Aquarium Compact KO ..... 9  
Two 12-BOARD MATCHES; CONTINUES 9 AM SAT  
Ravens Morning Side Series (4th of 5) ..... 9  
I/N Pairs 5/20/50 & 100/300/500 9 / 1 / 7  
Daylight Open Pairs ..... 10:30 & 3  
Hunt Cup KO ..... 1 & 7  
CONTINUES 1 & 7 SATURDAY

Open Pairs 1500/3000/3000+ ..... 1 & 7  
Thoroughbred **GOLD RUSH** ..... 1 & 7  
Orioles Side Series (1st, 2nd of 6) ..... 1 / 7  
Stratified Board-a-Match Teams ..... 7  
I/N Swiss Teams 100/300/500 ..... 7

## SATURDAY, AUGUST 20

Stratified Swiss Teams ..... 9  
Ravens Morning Side Series (5th of 5) ..... 9  
I/N Pairs 5/20/50 & 100/300/500 9 / 1 / 7  
Daylight Open Pairs ..... 10:30 & 3  
Weekend KO ..... 1 & 7  
CONTINUES 10:00 & TBA SUNDAY

Open Pairs 1500/3000/3000+ ..... 1 & 7  
Finish Line **GOLD RUSH** ..... 1 & 7  
Orioles Side Series (3rd, 4th of 6) ..... 1 / 7  
Stratified Swiss Teams ..... 7  
I/N Swiss Teams 100/300/500 ..... 7

## SUNDAY, AUGUST 21

7 SEVEN-BOARD MATCHES WITH SHORT LUNCH BREAK  
A/X Swiss Teams (0-5000, 5000+) 10 & TBA  
Bracketed Flight B Swiss Teams  
(0-3000) ..... 10 & TBA  
8 TEAMS PER BRACKET; 3 IN EACH BRACKET WIN GOLD  
Orioles Side Series (5th, 6th of 6) .10 / 2  
I/N Pairs 5/20/50 & 100/300/500 .10 / 2

**W**elcome to an elegant and upscale retreat at the completely renovated Hunt Valley Inn. Rooms, lobby, ballroom and restaurant all redone in grand style.

Enjoy the updated fitness center and pools  
Plus free WiFi and free parking for all!

—**Terrific room rate of \$115**—

Call 866-764-8359 by July 17 and mention "BRIDGE" to reserve

Plenty of fun restaurants nearby  
Famous Baltimore attractions accessible by car or light rail

♣ **Expert Lectures** Tuesday through Saturday

♦ **FAMOUS Panel Show** Friday at 6pm

♥ **Renowned Intermediate/Novice** program with special reception on Friday

♠ **Five days of GOLD RUSH**

♣ **Hunt Valley hospitality** every night

### Tournament Chair

**Diane Jaworiwsky**  
DianeJaw@verizon.net  
703-395-7796

### Partnerships

**Zeke Letellier**  
410-451-1772

**Marie Burgess-Strauss**  
usastrauss@verizon.net  
443-528-6651

• STRATIFICATIONS DETERMINED BY MP AVERAGES, BUT NO SINGLE PLAYER MAY EXCEED EVENT'S LIMIT • OPEN EVENTS AND SIDE SERIES STRATIFIED 0-750/750-3000/3000+, UNLESS NOTED • **GOLD RUSH** PAIRS (0-300/300-750) AWARD GOLD POINTS TO OVERALL WINNERS & 0-750 SECTION TOPS; RED POINTS TO 0-300 STRAT  
• I/N EVENTS STRATIFIED  
BASED ON ATTENDANCE

[www.districtsix.org](http://www.districtsix.org) FOR HOTEL PHOTOS & OTHER INFO  
MID-ATLANTIC ON THE WEB: [www.mabcbbridge.org](http://www.mabcbbridge.org)

Hosted by ♦ AUGUST 15-21, 2016 ♥ District 6 ♠

# CHARLOTTE, NC MID-ATLANTIC REGIONAL

## HILTON CHARLOTTE UNIVERSITY PLACE

704-547-7444 • 8629 J M KEYNES DRIVE

Room rate **\$100** • Deadline: **Sept. 23**

Deposit of one night required at booking, will be forfeited for cancellation after Sept. 23.

Booking code on Hilton.com: BRIDGE



STRATS DETERMINED BY MP AVERAGES, BUT NO PLAYER MAY EXCEED EVENT'S LIMIT.

### MONDAY, OCT. 24

Witches Bracketed Knockout	1:00 & 7:00
<i>Continues 1:00 &amp; 7:00 Tuesday</i>	
Open Pairs (1500/3000/3000+)	1:00 & 7:00
<b>GOLD RUSH</b> Pairs	1:00 & 7:00
Panthers Side Series (1st, 2nd of 4)	1:00 / 7:00
49er & 499er Pairs	1:00 / 7:00
Stratified Swiss Teams	7:00
499er Swiss Teams	7:00
<i>Aft. pair games benefit ACBL Ed. Foundation</i>	
<i>Eve. pair games benefit Leaves and Fishes</i>	

### TUESDAY, OCT. 25 0-5 MP players play free today

Tues-Wed Compact Knockout	9:00
<i>Continues 9:00 Wednesday</i>	
Sunrise 49er & 499er Pairs	9:00
Lake Norman Side Series (1st of 5)	9:00
Goblins Bracketed Knockout	1:00 & 7:00
<i>Continues 1:00 &amp; 7:00 Wednesday</i>	
Open Pairs (1500/3000/3000+)	1:00 & 7:00
<b>GOLD RUSH</b> Pairs	1:00 & 7:00
Panthers Side Series (3rd, 4th of 4)	1:00 / 7:00
49er & 499er Pairs	1:00 / 7:00
Stratified Swiss Teams	7:00
499er Swiss Teams	7:00

### Tournament Co-chairs

Arnold Hoffmann,  
704-875-6923, 980-254-7476  
ajhoffmann@carolina.rr.com

Len Case, 704-992-0397  
lencase@carolina.rr.com  
charlotteregional@gmail.com

**Partnerships:** John & Marlene Smith, 704-992-1260  
crzy4brdg@yahoo.com

- ALL KOs ARE BRACKETED, RANDOM DRAW WITH NO PLAYBACKS UNTIL UNAVOIDABLE. ONE- OR TWO-BRACKET KOs ARE HANDICAPPED.
- OPEN EVENTS, INCLUDING SIDE SERIES, ARE STRATIFIED 0-750, 750-3000, 3000+ UNLESS OTHERWISE NOTED
- A/X/Y EVENT STRATS ARE 0-4000, 4000-6000, 6000+

## Charlotte Halloween Regional

Conveniently located off I-85 North on Harris Blvd. East at University Place.

### Nearby attractions:

(Lots of Shopping, Dining, Entertainment)  
Concord Mills Shopping Mall  
Charlotte Motor Speedway  
The Shoppes at University Place  
UNC at Charlotte  
NASCAR Hall of Fame

Four Bracketed knockouts, Two Compact Knockouts, Four Two-session Swiss Team Events ... Excellent Intermediate/Newcomer Program with expert lectures daily ... Eight GOLD RUSH events in six days for 0-750 MP players ... Famous Mid-Atlantic Hospitality

...Racing for Gold in the NASCAR City!

### WEDNESDAY, OCT. 26

Two-sess. Open Swiss	9:00
(1500/3000/3000+)	9:00
Two-sess. <b>GOLD RUSH</b> Swiss Teams	9:00
<i>Two-session Swisses continue at 9:00 Thu.</i>	

Sunrise 49er & 499er Pairs	9:00
Lake Norman Side Series (2nd of 5)	9:00
Ghosts Bracketed Knockout	1:00 & 7:00
<i>Continues 1:00 &amp; 7:00 Thursday</i>	
Open Pairs (1500/3000/3000+)	1:00 & 7:00
<b>GOLD RUSH</b> Pairs	1:00 & 7:00
Hornets Side Series (1st, 2nd of 4)	1:00 / 7:00
49er & 499er Pairs	1:00 / 7:00
Stratified Board-a-Match Teams	7:00
499er Swiss Teams	7:00

### THURSDAY, OCT. 27

Thur-Fri Compact Knockout	9:00
<i>Continues 9:00 Friday</i>	

Sunrise 49er & 499er Pairs	9:00
Lake Norman Side Series (3rd of 5)	9:00
Open Swiss Teams (0-5000/5000+)	1:00 & 7:00
Mid-flight Swiss Teams	
(1500/3000)	1:00 & 7:00
<b>GOLD RUSH</b> Swiss Teams	1:00 & 7:00
Stratified Open Pairs	1:00 & 7:00
Hornets Side Series (3rd, 4th of 4)	1:00 / 7:00
49er & 499er Pairs	1:00 / 7:00
Stratified Swiss Teams	7:00
499er Swiss Teams	7:00



### FRIDAY, OCT. 28 - GOODWILL DAY

Two-sess. Open Swiss (1500/3000/3000+)	9:00
Two-sess. <b>GOLD RUSH</b> Swiss Teams	9:00
<i>Two-session Swisses continue at 9:00 Thu.</i>	

Sunrise 49er & 499er Pairs	9:00
Lake Norman Side Series (4th of 5)	9:00
Zombies Bracketed Knockout	1:00 & 7:00
<i>Continues 1:00 &amp; 7:00 Saturday</i>	
Open Pairs (1500/3000/3000+)	1:00 & 7:00
<b>GOLD RUSH</b> Pairs	1:00 & 7:00
Knights Side Series (1st, 2nd of 6)	1:00 / 7:00
49er & 499er Pairs	1:00 / 7:00
Stratified Swiss Teams	7:00
499er Swiss Teams	7:00
<i>Evening pair games benefit ACBL Ed. Foundation</i>	

### SATURDAY, OCT. 29

Sunrise 49er & 499er Pairs	9:00
Lake Norman Side Series (5th of 5)	9:00
Open Pairs (1500/3000/3000+)	1:00 & 7:00

<b>GOLD RUSH</b> Pairs	1:00 & 7:00
Knights Side Series (3rd, 4th of 6)	1:00 / 7:00
49er & 499er Pairs	1:00 / 7:00
Stratified Swiss Teams	7:00
499er Swiss Teams	7:00



### SUNDAY, OCT. 30

A/XY Swiss Teams	10:00 & TBA
Bracketed Flight B Teams	
(0-3000)	10:00 & TBA
Knights Side Series (5th, 6th of 6)	10:00 / 2:00
49er & 499er Pairs	10:00 / 2:00
499er Swiss Teams	10:00 / 2:00

Hosted by ♦ OCTOBER 24-30, 2016 ♥ District 7

# NORFOLK, VA MID-ATLANTIC REGIONAL

**Norfolk Waterside Marriott:** 235 E. MAIN ST.  
 CALL 1-800-228-9290 OR 757-627-4200 NORFOLK, VA 23510

—AND MENTION "BRIDGE" FOR THE \$107 BRIDGE RATE

\*Free parking & free Wifi for hotel guests\* **Nearby Attractions** include (most within walking distance): MacArthur Memorial, MacArthur Mall, Nauticus Museum, Battleship Wisconsin, Chrysler Museum, Harbor Cruises, and many more.

 **Fine Virginia hospitality every night**  **Plenty of restaurants within walking distance** 

*Come to Tidewater and play bridge with us!*



## Popular District 6 Intermediate Newcomer Program

• **Five Gold Rush pair games** • **I/N games every session** • **Expert speakers before afternoon and evening games**

STARTS DETERMINED BY MP AVERAGES,  
 BUT NO SINGLE PLAYER MAY EXCEED THE EVENT'S LIMIT

### MONDAY, NOVEMBER 14

Open Pairs 1500/3000/3000+ .....1 & 7  
 Ensign **GOLD RUSH** Pairs .....1 & 7  
 I/N Pairs 5/20/50 & 100/300/500 .....1 / 7  
 Semper Fi KO .....1 & 7

*Continues 1 & 7 Tuesday*

Nauticus Side Series (1st, 2nd of 5) .....1 / 7  
 Stratified Charity Swiss Teams .....7

*Afternoon games benefit ACBL Ed. Foundation  
 Evening games benefit Toys for Tots*

### TUESDAY, NOVEMBER 15

Chrysler Compact KO .....9  
*Two 12-board matches; continues 9 am Wed.*  
 Nauticus Side Series (3rd, 4th, 5th of 5) 9 / 1 / 7  
 I/N Pairs 5/20/50 & 100/300/500 .....9 / 1 / 7

*0-5 MP players FREE today*

Open Pairs 1500/3000/3000+ .....1 & 7  
 Captain **GOLD RUSH** Pairs .....1 & 7  
 MacArthur KO .....1 & 7

*Continues 1 & 7 Wednesday*

Stratified Swiss Teams .....7  
 I/N Swiss Teams 100/300/500 .....7

### WEDNESDAY, NOVEMBER 16

Elizabeth River Compact KO .....9  
*Two 12-board matches; continues 9 am Thu.*  
 Waterside Side Series (1st, 2nd, 3rd of 6) 9 / 1 / 7  
 I/N Pairs 5/20/50 & 100/300/500 .....9 / 1 / 7

Early Bird Open Pairs 1500/3000/3000+ .9 & 1  
 Early Bird **GOLD RUSH** Pairs .....9 & 1  
 Freemason KO .....1 & 7

*Continues 1 & 7 Thursday*

Stratified Swiss Teams .....7  
 I/N Swiss Teams 100/300/500 .....7

### THURSDAY, NOVEMBER 17

Marriott Compact KO .....9  
*Two 12-board matches; continues 9 am Fri.*

Waterside Side Series (4th, 5th, 6th of 6) 9 / 1 / 7  
 I/N Pairs 5/20/50 & 100/300/500 .....9 / 1 / 7  
 Open Pairs 1500/3000/3000+ .....1 & 7

A/X Swiss 0-5000/5000+ .....1 & 7  
 Bracketed B Teams 0-3000 .....1 & 7  
*8 teams per bracket; 3 in each win gold*

Stratified Swiss Teams .....7

### FRIDAY, NOVEMBER 18

Old Dominion Compact KO .....9  
*Two 12-board matches; continues 9 am Sat.*

USS Wisconsin Side Series (1st, 2nd of 4) .9 / 1  
 I/N Pairs 5/20/50 & 100/300/500 .....9 / 1 / 7  
 Open Pairs 1500/3000/3000+ .....1 & 7

Commander **GOLD RUSH** Pairs .....1 & 7  
 Scope KO .....1 & 7  
*Continues 1 & 7 Saturday*

Ghent Side Series (1st of 4) .....7

Stratified Swiss Teams .....7

I/N Swiss Teams 100/300/500 .....7

### SATURDAY, NOVEMBER 19

Stratified Swiss Teams .....9  
 USS Wisconsin Side Series (3rd, 4th of 4) .9 / 1

I/N Pairs 5/20/50 & 100/300/500 .....9 / 1 / 7  
 Open Pairs 1500/3000/3000+ .....1 & 7  
 Admiral **GOLD RUSH** Pairs .....1 & 7

Granby Street KO .....1 & 7  
*Continues 10 am & TBA Sunday*

Ghent Side Series (2nd of 4) .....7

Stratified Board-a-Match Teams .....7

I/N Swiss Teams 100/300/500 .....7

### SUNDAY, NOVEMBER 20

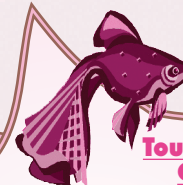
*Seven 7-board matches with short lunch break*

A/X Swiss 0-5000/5000+ .....10 & TBA  
 Bracketed B Teams 0-3000 .....10 & TBA

*8 teams per bracket; 3 in each win gold*

Ghent Side Series (3rd, 4th of 4) .....10 / 2

I/N Pairs 5/20/50 & 100/300/500 .....10 / 2



### Tournament Chairs

**Brian Boyce**

brian@bfboyce.com,  
 (757) 412-4925  
 (757) 434-0792

**Jennifer Christman**

jchristman8@cox.net  
 (757) 427-1244  
 (757) 574-7118

### Partnerships

**Shary Schlain**

sharyschlain@cox.net  
 (757) 481-7897  
 (757) 339-2894

- ALL KNOCKOUTS (KOs) ARE BRACKETED, RANDOM DRAW & INCLUDE 0-300 MP PLAYERS
- 1- & 2-BRACKET KOs ARE HANDICAPPED
- OPEN EVENTS & SIDE SERIES, ARE STRATIFIED 0-750/750-3000/3000+, UNLESS NOTED
- I/N EVENTS STRATIFIED BASED ON ATTENDANCE
- GOLD RUSH PAIRS (0-300/300-750) AWARD GOLD POINTS TO OVERALL WINNERS AND 0-750 SECTION TOPS; RED POINTS TO 0-300 START

# ancaster. PA DISTRICT 4 REGIONAL

## Spooky Nook

2913 Spooky Nook Road  
Manheim, PA 17545  
(855) 618-6181

For GPS

75 Champ Boulevard  
Manheim, PA 17545

### Great New Hotel

Rated 5 Stars on Trip  
Advisor Rated Excellent  
on Booking.com —\$109  
Use Registration Code  
#761 when reserving

### Tournament Chairs

**DEBI & JOHN KLINGER**

(717) 394-0171, [dhklinger@epix.net](mailto:dhklinger@epix.net)

### Partnership Chair

**ANDIE SHEAFFER**

(717) 581-1003, [andie.sheaffer@gmail.com](mailto:andie.sheaffer@gmail.com)

### New Early Start Times

10:30 & 3:00

### Intermediate/Newcomer Program

#### 0-20 Relaxed Game

on Monday at 2:00 PM with **No Entry Fee**

#### Stratified 199er Pairs

at 2:00 PM & 7:30 PM on Monday

#### Stratified 199er Pairs

at 10:30 AM & 3:00 PM on Tues. through Sat.

—Free lectures every day—

### TAP

### Teacher Accreditation Program

Oct 30 & Oct 31

See District 4 Website for information

[www.district4.info](http://www.district4.info)



# Red Rose Regional at Spooky Nook

### Highlights

- Terrific Hospitality Nightly
- FREE Parking
- Gold Rush & Mid-Flight Pairs and Teams
- Great New Location

### Schedule Features...

Gold Rush Pairs on Monday, Tuesday, Wednesday, Friday and Saturday

Gold Rush Bracketed Swiss Teams on Thursday & Sunday

Golden Mid-Flight B/C Pairs on Tuesday, Wednesday and Friday

Bracketed KO Teams on Monday at 2:00 & 7:30 PM

New Knockouts begin Tuesday, Wednesday & Friday at 10:30 AM

1 Day Compact KO Teams—Saturday

## Schedule

### MONDAY, OCTOBER 31

0-20 Relaxed Game (Single Session; NO ENTRY FEE) ..... 2:00 PM

Monday-Tuesday Bracketed KO Teams - Round 1 & 2 ..... 2:00 PM & 7:30 PM  
(Continues on Tuesday at 10:30 AM and 3:00 PM)

Stratiflighted A/X/Y Pairs (3000+; 1500-3000; 0-1500) ..... 2:00 PM & 7:30 PM

**GOLD RUSH** 3-Strat Pairs (0-100; 100-300; 300-750) ..... 2:00 PM & 7:30 PM

Charity Stratified Open Pairs (Single Sessions) ..... 2:00 PM & 7:30 PM

199er Pairs (Single Sessions) ..... 2:00 PM & 7:30 PM

Charity Stratified Swiss Teams (Single Session) ..... 7:30 PM

### TUESDAY, NOVEMBER 1

Morning Side Pair Game Series (Session 1 of 5) ..... 10:30 AM

Monday-Tuesday Bracketed KO Teams (3rd & 4th) ..... 10:30 AM & 3:00 PM

Tuesday-Wednesday Bracketed KO Teams (1st & 2nd) ..... 10:30 AM & 3:00 PM

Stratiflighted A/X Pairs (0-5000; 5000+) ..... 10:30 AM & 3:00 PM

**GOLDEN** Mid-Flight B/C Pairs (0-1500; 1500-3000) ..... 10:30 AM & 3:00 PM

**GOLD RUSH** 2-Strat Pairs (0-300; 300-750) ..... 10:30 AM & 3:00 PM

199er Pairs (single sessions) ..... 10:30 AM & 3:00 PM

Afternoon Side Pair Game Series (Session 1 of 5) ..... 3:00 PM

Stratified Swiss Teams (Single Session) ..... 3:00 PM

Evening Side Fast Pair Game Series (Session 1 of 4) ..... 7:30 PM

### WEDNESDAY, NOVEMBER 2

Morning Side Pair Game Series (Session 2 of 5) ..... 10:30 AM

Tuesday-Wednesday Bracketed KO Teams (3rd & 4th) ..... 10:30 AM & 3:00 PM

Wednesday-Thursday Bracketed KO Teams (1st & 2nd) ..... 10:30 AM & 3:00 PM

Stratiflighted A/X Pairs (0-5000; 5000+) ..... 10:30 AM & 3:00 PM

**GOLDEN** Mid-Flight B/C Pairs - (0-1500; 1500-3000) ..... 10:30 AM & 3:00 PM

**GOLD RUSH** 2-Strat Pairs (0-300; 300-750) ..... 10:30 AM & 3:00 PM

199er Pairs (single sessions) ..... 10:30 AM & 3:00 PM

Afternoon Side Pair Game Series (Session 2 of 5) ..... 3:00 PM

Stratified Swiss Teams (Single Sessions) ..... 3:00 PM

Evening Side Fast Pair Game Series (Session 2 of 4) ..... 7:30 PM

### THURSDAY, NOVEMBER 3

Morning Side Pair Game Series (Session 3 of 5) ..... 10:30 AM

Wednesday-Thursday Bracketed KO Teams continue ..... 10:30 AM & 3:00 PM

Open Bracketed Swiss Teams ..... 10:30 AM & 3:00 PM

Stratified Open Pairs ..... 10:30 AM & 3:00 PM

**GOLD RUSH** Bracketed Swiss Teams (0-300; 300-750) ..... 10:30 AM & 3:00 PM

199er Pairs (Single Sessions) ..... 10:30 AM & 3:00 PM

Afternoon Side Pair Game Series (Session 3 of 5) ..... 3:00 PM

Evening Side Fast Pair Game Series (Session 3 of 4) ..... 7:30 PM

### FRIDAY, NOVEMBER 4

Morning Side Pair Game Series (Session 4 of 5) ..... 10:30 AM

Friday-Saturday Bracketed KO Teams (1st & 2nd) ..... 10:30 AM & 3:00 PM

Stratiflighted A/X Pairs (0-5000; 5000+) ..... 10:30 AM & 3:00 PM

**GOLDEN** Mid-Flight B/C Pairs - (0-1500; 1500-3000) ..... 10:30 AM & 3:00 PM

**GOLD RUSH** 2-Strat Pairs (0-300; 300-750) ..... 10:30 AM & 3:00 PM

199er Pairs (Single Sessions) ..... 10:30 AM & 3:00 PM

Afternoon Side Pair Game Series (Session 4 of 5) ..... 3:00 PM

Stratified Swiss Teams (Single Session) ..... 3:00 PM

Evening Side Fast Pair Game Series (Session 4 of 4) ..... 7:30 PM

### SATURDAY, NOVEMBER 5

Morning Side Pair Game Series (Session 5 of 5) ..... 10:30 AM

Friday-Saturday Bracketed KO Teams (3rd & 4th) ..... 10:30 AM & 3:00 PM

Stratiflighted A/X/Y Pairs (3000+; 1500-3000; 0-1500) ..... 10:30 AM & 3:00 PM

Bracketed Compact KO Teams ..... 10:30 AM & 3:00 PM

**GOLD RUSH** 2-Strat Pairs (0-300; 300-750) ..... 10:30 AM & 3:00 PM

199er Pairs (Single Sessions) ..... 10:30 AM & 3:00 PM

Afternoon Side Pair Game Series (Session 5 of 5) ..... 3:00 PM

Stratified Swiss Teams (Single Session) ..... 3:00 PM

Zip Swiss (Single Session) ..... 7:30 PM

### SUNDAY, NOVEMBER 6

Open Bracketed Swiss ..... 10:30 AM & TBA

**GOLD RUSH** Bracketed Swiss Teams (0-300; 300-750) ..... 10:30 AM & TBA

(All Swiss Teams will be seven 7 board matches with a half hour break)  
Lunch Tickets Sold Before the Game

OVERALLS AND SECTION TOPS IN ANY FLIGHT OR STRATUM WITH AN UPPER LIMIT OF 750 OR GREATER ARE GOLD. \* ALL EVENTS ARE STRATIFIED BY AVERAGE. \* IN ANY EVENT OR FLIGHT WITH AN UPPER LIMIT. \* NO INDIVIDUAL PLAYER'S MP TOTAL MAY EXCEED THAT UPPER LIMIT. \* KOs WITH TWO BRACKETS OR LESS WILL BE HANDICAPPED. \* ALL STRATIFIED GAMES (UNLESS NOTED) ARE: A = 2500+; B = 750-2500; C = 0-750. \* STRATIFIED 199ER PAIRS ARE: A = 100-200; B = 50-100; C = 0-50



**2016-17  
NORTH AMERICAN  
PAIRS**

**4 Pairs Qualify in the 0-2500  
and NLM! (3 in the Open)**

There's still time to qualify for the North American Pairs, a North American Championship that begins in your club and concludes at the Spring 2017 NABC in Kansas City, Missouri. Come out and play in a local club qualifier. You've got to play to win!

**Club qualifying** for the 2016-2017 event continues until the end of August 2016. There are three flights: Open, 0-2500 and Non-Life Master (with fewer than 500 points). Qualification in a flight qualifies you for all lower flights for which you are eligible. Qualification is by individual (not pair) – including flight eligibility — from any club qualifier in the ACBL directly to the District 6 Final. Flight eligibility is determined by your masterpoint holding on June 1, 2016. All players who play in the District Final must have qualified at the club level and be bona fide members of District 6. **There will be no exceptions.** See the District 6 website ([www.districtsix.org](http://www.districtsix.org)) for information on club games in your area.

The District 6 Final for all flights will be held on the weekend of September 24-25, 2016. The Open Flight and 0-2500 Flight Finals will be 4-session events, with roughly half the field qualifying for the second day. The NLM Flight Final will be a 2-session event held on Sunday, September 25.

The Open event and the Northern site for the 0-2500 and NLM competition will be at the White Oak Community Center, 1700 April Lane, Silver Spring, MD. Game time is noon and TBA on Saturday, and 11 and TBA on Sunday.

The 0-2500 and NLM will have a Southern site in Richmond VA, at the Clarion Hotel, 3207 North Boulevard. (Special Bridge Rate: \$59.00! Call 804-359-9441) Game time is 10:30 and TBA both days.

Players with 0-2500 MPs and NLMs with fewer than 500 MPs may play at either site.

**Pre-registration is required in order to play in the District Finals. Pairs must pre-register by Sept. 15, 2016.** To

*continued on pg. 10, column 3, bottom*

**Norfolk/  
Virginia  
Beach**

**2016  
Non-Life  
Master  
Sectional**



**UNIT 146 BRIDGE CENTER**

4966 Euclid Road  
Virginia Beach, VA 23462

**Directions:** Take North Witchduck exit off I-264. After 4/10 mile, turn right onto Cleveland Street. After 3/10 mile, turn diagonally right onto Euclid Road. The Bridge Center is at 4966 Euclid Road, 3/10 mile on the left, in the U-shaped Pocahontas Office Park.

**Nearby Hotels:**

Hampton Inn, 5793 Greenwich Road, Virginia Beach, 757-490-9800  
Motel 6, 4760 Euclid Road, Virginia Beach, 757-499-1935

**Play for SILVER POINTS!!!**

**Saturday, August 27 (Lecture/Workshop between sessions; Lunch served)**

Stratified Pairs (0-50, 50-200, 200-NLM up to 500) . . . . .10:30 AM  
Stratified Pairs (0-50, 50-200, 200-NLM up to 500) . . . . .3:00 PM

**Sunday, August 28 (Lunch served)**

Stratified Swiss Teams (0-100, 100-200, 200-NLM up to 500) . . . . .10:30 AM  
(Play-through with 1/2 hour break for meal)

—Strata may be adjusted according to attendance—

**Tournament Chair:**

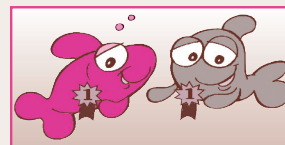
**Karlie Walker**, 757-467-2824, [kwalker20@cox.net](mailto:kwalker20@cox.net)

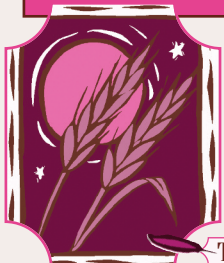
**Partnership Chair:**

**Brian Boyce**, 757-412-4925, [brian@bfboyce.com](mailto:brian@bfboyce.com)

**Entries:** \$10 per person per pairs session;  
\$84 per team (Includes meal between sessions for 4 team members)  
Additional \$3 for unpaid or non-ACBL members

**Great Hospitality:** Includes free snacks, sodas and coffee for all events; plus a meal between sessions both days.





NORTHERN VIRGINIA BRIDGE ASSOCIATION  
**SEPTEMBER SENSATIONS  
 SECTIONAL TOURNAMENT**

**The Arlington/Fairfax Elks Lodge #2188**  
 8421 Arlington Boulevard, Fairfax, VA; 703-560-2188

**THURSDAY, SEPTEMBER 9**

STRATIFIED OPEN (2000+/2000/750) or 500/300/100 PAIRS .....10:30 a.m.  
*Norma's Game: K of C Hall, 5115 Little Falls Rd., Arlington, VA, 703-892-1292*

*Evening games at: NVBA: Beth El Hebrew Congregation, 3830 Seminary Road, Alexandria, VA or  
 WBL: Ohr Kodesh Congregation, 8300 Meadowbrook Ln, Chevy Chase, MD NVBA (Beth El) WBL*

*Intermediate/Newcomer Lecture .....6:30 p.m.*  
 STRATAFLIGHTED OPEN PAIRS (A/X=3000+/3000; B/C=2000/750) .....7:00 p.m. 7:30 p.m.  
 NVBA 199ER SWISS TEAMS (200/100/50/20); WBL NLM PAIRS (NLM/100/50) 7:00 p.m. 7:30 p.m.

**FRIDAY, SEPTEMBER 9**

*Gene's Friday Morning Game at KOCH: .....9:30 a.m.*  
 STRATIFIED OPEN (2000+/2000/750) or 500/300/100 PAIRS (NLMs only)

**...REST OF TOURNAMENT AT ELKS LODGE...**

*Intermediate/Newcomer Lecture .....1:15 p.m.*  
 STRATAFLIGHTED A/X (3000+/3000) or B/C (2000/750) PAIRS 2 p.m.  
 I/N (500/300/100) or 49ER (50/20/5) PAIRS .....2 p.m.  
 TRIPLE NICKEL SWISS—5 rounds, 5 boards, 5 minutes a board ..7:30 p.m.  
 I/N (500/300/100) PAIRS .....7:30 p.m.

**SATURDAY, SEPTEMBER 10**

STRATAFLIGHTED A/X (3000+/3000) or B/C (2000/750) PAIRS 9:30 a.m.  
 I/N (500/300/100), 49ER (50/20) or NEWCOMER (0-5) PAIRS 9:30 a.m.  
*Intermediate/Newcomer Lecture .....1:15 p.m.*

**\*\*ALL events on Sat. afternoon & evening award REGIONALLY RATED SILVER POINTS—an additional \$1 will be added to your entry fee to support Grass Roots events in our local area!—Details at [www.nvba.org](http://www.nvba.org)\*\***

FLIGHT A/X PAIRS (3000+/3000; 2-session Play-thru event) 2 & 7:30 p.m.  
 —Single session pairs accommodated during the evening session  
 STRATIFIED B/C PAIRS (2000/750; 2 single sessions) ... .2 & 7:30 p.m.  
 STRATIFIED SIDE GAME (3000+/3000) .....2 p.m.  
 I/N (500/300/100) or 49ER PAIRS (50/20/5) .....2 p.m.  
 I/N (500/300/100) PAIRS .....7:30 p.m.

**SUNDAY, SEPTEMBER 11**

FLIGHTS A/X (5000+/5000) SWISS TEAMS .....11 a.m. & TBA  
 BRACKETED FLIGHT B TEAMS (no single player >2500) ...11 a.m. & TBA  
*B Teams Bracketed by Total Team Masterpoints: three overall places in each.*  
*A/X Swiss & B/C Teams: 2-session events, a brief break & food available on-site.*  
 I/N (500/300/100) SWISS TEAMS (Single sessions) ..11 a.m. / 3:15 p.m.  
 49ER (50/20/5) SWISS TEAMS (Single session) .....11 a.m.

**STRATIFICATION** of events is based on average masterpoints of the team or pair. In any event or flight with an upper limit, no individual's total Masterpoint holding may exceed that upper limit.

**DIRECTIONS:** From Route 50/Arlington Boulevard heading west from DC and Arlington AND from Route 495/Beltway: Continue on/Take Route 50 West about one mile outside the Beltway, and turn left at Javier Road (the second stoplight after the intersection of 50 and 495). Take an immediate right onto the access road that runs parallel to Route 50. The Elks Lodge will be two buildings down on your left—parking on the side and in the rear. **From Fairfax, heading East on Route 50:** Pass the intersection of Route 50 and Prosperity Avenue—the Prosperity Medical Center will be on your right. Between the first and second lights after Prosperity, turn right into the access road that runs parallel to Route 50 and look for the Elks Lodge immediately to your right—parking on the far side of the building and in the rear.

**District Six Honor Roll:**  
**Reno Spring NABC,**  
**March 11-20, 2016**

**TOP TEN LISTS**

**District Six Members**

1	185.25	Steve Robinson
	185.25	Peter Boyd
3	146.13	Greg Humphreys
4	142.53	Sylvia Shi
5	128.37	Marty Nelson
	128.37	Gil Cohen
7	68.00	Beth Palmer
8	60.40	Fred King
9	59.28	Mark Dahl
10	57.06	Ronald Kral

**District Six Members with 0-3000 MPs**

1	53.16	John McAllister
2	37.89	George Parkins
3	36.28	Ann Atcheson
	36.28	M David Jackson
5	35.59	Tobey Roland
6	27.71	Charles Dearolf
7	24.99	Calvin Konner
8	24.94	Terry Klein
9	24.37	Ted Van Dyke
	24.37	Franny Van Dyke

**District Six Members with 0-750 MPs**

1	27.71	Charles Dearolf
2	24.94	Terry Klein
3	24.37	Ted Van Dyke
	24.37	Franny Van Dyke
5	14.65	Jeremy Lewis
6	11.99	Roberta Shaker
	11.99	Richard Shaker
8	10.17	Edward Kelley IV
9	8.71	Darlyn Counihan
10	8.38	Charlton Gnad Jr

**District Six Members with 0-300 MPs**

1	8.71	Darlyn Counihan
2	8.38	Charlton Gnad Jr
3	4.94	Kathleen Parkins
4	3.52	Louise Ragland
5	2.68	Linda Meade
6	2.57	James Stiff
7	2.57	Brian Knapik
8	0.89	Eric Cassel

*Plenty of free parking! On-site snack bar plus lots of free treats! Many great restaurants nearby!*

*Championship Events and a Full Schedule of 299er Events for Novice and Intermediate Players!  
 Players with 0-5 Masterpoints play **FREE** in **ALL** games!*

**Tournament Chair**

*Margot Hennings,  
 703-560-0245*

**Partnership Chair**

*Marty Bley  
 nvbapartnerships@gmail.com  
 571.789.8338 (C)*

*Mid-Chart Conventions permitted in all A/X Events*

**Next NVBA Sectional  
 Oct 20-23 at Arlington/  
 Fairfax Elks Lodge  
 (Thurs at Beth El)**

**[www.nvba.org](http://www.nvba.org)**

**OVERALL PLACINGS  
IN NATIONALLY RATED EVENTS**

*Special congratulations to our  
1st place overall winners:*

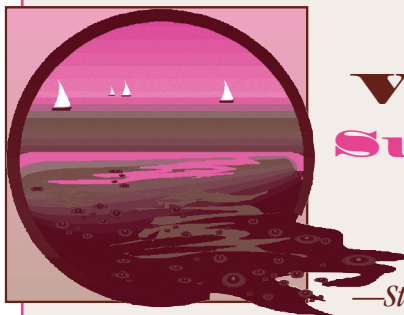
**Steve Robinson** and **Peter Boyd** in the  
*Baldwin Flight A North American Pairs*

**Greg Humphreys**  
in the *Rockwell Mixed Pairs*

**Marty Nelson** and **Gil Cohen**  
in the *NABC+ Fast Pairs*

**Daniel Korbel**  
in the *Jacoby Swiss Teams*

▲ **Norfolk/Va. Beach, VA** ♣ **SEPTEMBER 16-18, 2016** ♦



**Norfolk/  
Virginia Beach  
Summer Sectional**

**Unit 146 Bridge Center**

4966 Euclid Road, Virginia Beach, VA 23462

—Stratification based on partnership/team average—

**BALDWIN FLT A NORTH AMERICAN PAIRS**

- 1 Steve Robinson**, Arlington VA;  
**Peter Boyd**, Darnestown MD  
10 Robert Bell, Silver Spring MD;  
Lou Reich, Wheaton MD

**GOLDER FLT B NORTH AMERICAN PAIRS**

- 15 Steve Bunning, Vienna VA;  
Jose Cortina, Oak Hill VA

**PRESIDENT'S CUP NAP FLT C**

- 5 Terry Klein, Brookeville MD;  
Charles Dearolf, Silver Spring MD

**LEBHAR IMP PAIRS**

- 5 Fred King, Mc Lean VA  
46 Sumner Steinfeldt, Washington DC;  
Kenneth Davis, Alexandria VA

**10K SWISS TEAMS**

- 14 Margot Hennings, Annandale VA

**KAY PLATINUM PAIRS**

- 9 Peter Boyd, Darnestown MD; Steve  
Robinson, Arlington VA  
12 Sylvia Shi, Rockville MD;  
Beth Palmer, Chevy Chase MD

**LEVENTRITT SILVER RIBBON PAIRS**

- 37 Gil Cohen, Ashburn VA; Marty  
Nelson, Annapolis MD  
47 Mark Dahl, Richmond VA  
50 Mary Tenenbaum - Alan  
Tenenbaum, Rockville MD

**ROCKWELL MIXED PAIRS**

- 1 Greg Humphreys**,  
Charlottesville VA  
2 Stephen Sanborn - Kerri Sanborn,  
Delray Beach FL  
8 Sylvia Shi, Rockville MD  
23 David Ruderman, Burtonsville MD;  
Linda Marshall, Bethesda MD

continued on pg. 10, column 3

**Directions:** Take North Witchduck exit off I-264. After 4/10 mile, turn right onto Cleveland Street. After 3/10 mile, turn diagonally right on Euclid Road. The Bridge Center is at 4966 Euclid Road, 3/10 mile on the left, in the U-shaped Pocahontas Office Park.

**Nearby Hotels:** **Hampton Inn**, 5793 Greenwich Road, Virginia Beach, 757-490-9800  
**Motel 6**, 4760 Euclid Road, Virginia Beach, 757-499-1935

*Fri & Sat PM games regionally rated—extra points, no extra money.*

**Friday, September 16**

*(Light lunch served between sessions)*

- Stratified Pairs (single sessions) . . . . 10:30 AM & 2:30 PM  
(0-750, 750-1500, 1500+ MPs)  
Novice Pairs (single sessions) . . 10:30 AM & 2:30 PM  
(0-100, 100-200, 200-NLM up to 500)

**Saturday, September 17**

*(Light lunch served between sessions)*

- Stratified Pairs (0-750, 750-1500, 1500+ MPs) 10:30 AM  
Novice Pairs . . . . . 10:30 AM  
(0-100, 100-200, 200-NLM up to 500)  
Bracketed Pairs/Board-A-Match Teams . . . . . 2:30 PM  
(Play in a stratified pairs game. At the same time, each pair is teamed according to MP (highest to lowest). *Two chances to win!*)

**Sunday, September 18**

- Stratified Swiss Teams (0-750, 750-1500, 1500+ MPs) . . . . . 10:30 AM & TBA  
Novice Stratified Swiss Teams (0-100, 100-200, 200-NLM up to 500) . . 10:30 AM & TBA

**Entries:** \$10 per person per pairs session; \$84 per team (includes meal between sessions for 4 team members). Additional \$3 for unpaid or non-ACBL members.

**Great Hospitality:** Includes free snacks, sodas and coffee for all events.

— Strata may be adjusted at director's discretion based on attendance—

**Tournament  
Co-Chairs**

**Chris Warnstaff**  
cwarnstaff@msn.com  
757-348-3188

**Karen Dickinson**  
kjcdickinson1@verizon.net  
757-739-2919

**Partnership Chair**

**Pearl Harrell**  
pearlharrell@gmail.com  
757-539-0951, 757-  
675-0143 (M)



# The Maryland Bridge Association

—presents—

## Baltimore's Chesapeake Fall Sectional

at the **COMFORT INN – BWI AIRPORT**

6921 Baltimore-Annapolis Blvd., Baltimore, MD 21225 ☎ 410-789-9100

### Silver Points!

Our Schedule! Including free coffee, soft drinks and refreshments and a Lecture with Game Analysis after the Saturday Morning Game! For the Sunday Swiss, sandwiches are available for purchase (partially subsidized by Maryland Bridge Assn.) —All pair events are single session—



#### FRIDAY, September 30

**Stratified Grass Roots Pairs:** 0-1500/3000/3000+ MPs .....1 pm  
(The entry fee for this game is \$1 additional. 40% more masterpoints awarded!  
Helps fund the GNTs and NAPs)

**I/N Stratified Pairs:** 0-200/500/1000 MPs .....1 pm

**Triple Nickel Swiss:** (5 rounds, 5 boards, 5 minutes a board) .....7 pm

#### SATURDAY, October 1 —2 single session events

**Stratified Pairs:** 0-1500/3000/3000+ MPs .....10 am & 3 pm

**I/N Stratified Pairs:** 0-200/500/1000 MPs .....10 am & 3 pm

#### SUNDAY, October 2

**Stratified Swiss Teams . . .10 am - Playthru**

Stratified by average of total MPs

**I/N Swiss Teams . . . . .10 am & 2 pm**

0-5/20/50 and 100/200/500 MPs,  
2 single session events

DIRECTIONS from North and South: Take Baltimore-Washington Parkway (MD Route 295) to Baltimore Beltway East (I-695 toward Glen Burnie). Take the Northbound Camp Meade Road Exit #6A and continue north for 1/2 mile. You can see the Comfort Inn at the next traffic light.



**TOURNAMENT CHAIR**  
**Renate Conlon**  
443-527-4744,  
[rjconlon@hotmail.com](mailto:rjconlon@hotmail.com)

**PARTNERSHIPS**  
**Pat Murty**  
410-323-6206,  
[129firef@comcast.net](mailto:129firef@comcast.net)

#### Reno Overalls, cont. from p 9

#### SILODOR OPEN PAIRS

- 12 Harry Gellis, Midlothian VA;  
Dwayne Jones, Mechanicsville VA
- 22 Mark Dahl, Richmond VA
- 28 Ai-Tai Lo, Reston VA
- 40 Ronald Kral, Reston VA

#### NABC+ FAST PAIRS

- 1 Marty Nelson**, Annapolis MD;  
**Gil Cohen**, Ashburn VA
- 4 Sylvia Shi, Rockville MD
- 6 Greg Humphreys, Charlottesville VA
- 18 Jay Kelkar, Oak Hill VA
- 21 David Walker, Salem VA
- 32 Ronald Kral, Reston VA

#### JACOBY SWISS TEAMS

- 1 Daniel Korbel**, Rockville MD
- 23/24 Mark Dahl, Richmond VA
- 27 John McAllister, Charlottesville VA
- 31 James Fox - Judy Fox,  
Virginia Beach VA
- 44 Steve Robinson, Arlington VA;  
Peter Boyd, Darnestown MD

#### VANDERBILT KO TEAMS

- 5/8 Daniel Korbel, Rockville MD

#### North American Pairs, cont. from p 7

pre-register, send the player names, contact information and player numbers and a check made payable to District 6 in the amount of \$50.00, to cover two (2) sessions of the event. For the NORTH, send it to: District 6, 3353 Taleen Ct., Annandale, VA 22003-1161. Pre-register for the SOUTH by sending a check for \$50.00 along with player information to: Barry Fratkin, 1935 Hickoryridge Road, Richmond, VA 23238. A list of registered pairs will be posted on the District 6 website after registration closes.

Qualifiers who play in the National Final will be subsidized (to various extents) for travel expenses and hotel rooms by the ACBL and/or District 6. Membership dues or Life Master service fee must be current and continuous from the start of the 2016-17 District Final to the completion of the North American Pairs Final at the Kansas City NABC in order to play in the National Final.

For more information and directions to the playing sites, visit the District 6 website at [www.districtsix.org](http://www.districtsix.org) or contact Sylvia Shi at 289-788-0385 or [sylviamshi@gmail.com](mailto:sylviamshi@gmail.com).

## **Retrospective on Reno and Deliberations in DC**

**—REPORT FROM DISTRICT  
DIRECTOR MARGOT HENNINGS,**

[Margot10bridge@cox.net](mailto:Margot10bridge@cox.net)

Like the ACBL, District 6 (D6) has been diligently looking for ways to cut costs and better serve you, its members. Starting this year, based on the results of a district-wide survey, the number of issues of the D6 TableTALK publication was reduced from six to four, saving D6 approximately \$7000 per issue. This decision to publish only quarterly is a good one, but like all decisions, has unintended consequences. Timing of ads and reports is sometimes skewed and it is that way with this report. The May-June-July issue went to print before the March NABC Reno Report could be written, so that report appears in this issue, which went to the printer before the July ACBL Board of Directors (BOD) meetings at the DC NABC even began. This means that any decisions or actions taken by the ACBL BOD this summer NABC in DC cannot be reported in *TableTALK* until November, when the Orlando NABC will start. A look at what will be discussed in DC is presented below, and a full report on the DC NABC BOD actions will be posted on the D6 website in mid-August.

### **Congratulations to D6 Members on Top NABC Event Finishes in Reno!**

Perennial top finishers Peter Boyd and Steve Robinson were successful again this Spring, winning the Flight A North American Pairs (NAP) and placing 9<sup>th</sup> in the Platinum Pairs, arguably the toughest pairs event on the NABC schedule. Long-time players and D6 Members Gil Cohen and Marty Nelson notched a win in the NABC Fast Pairs, while new D6 resident Daniel Korbel together with his out-of-district teammates won the final weekend NABC+ Jacoby Swiss. Beth Palmer and Sylvia Shi tuned up in the Platinum Pairs, coming in 12<sup>th</sup> before going on to win the recent United States Bridge Federation's Women's Team Trials in CA and, thereby, the right to represent the US in Poland at the World Championships this summer. Sylvia also turned in her usual steady performance

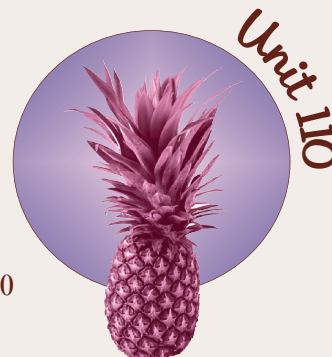
*continued on pg. 12, column 3*

♣ Williamsburg, VA ♣ SEP 30 - OCT 2, 2016 ♦

## **Williamsburg Fall Sectional**

**DOUBLETREE BY HILTON**

50 Kingsmill Road • 757-220-2500



### **Friday, September 30**

Stratified Pairs .....10:30 am & 3:00 pm  
(0-300, 300-1250, 1250+ MPs—Average points) (*single sessions*)

Newcomer/99er Pairs (*single sessions*) (*if attendance warrants*) 10:30 am & 3:00 pm

### **Saturday, October 1**

Stratified Pairs (0-300, 300-1250, 1250+ MPs —Average points) .....10:30 am

Newcomer/99er Pairs (*if attendance warrants*) .....10:30 am

Bracketed Pairs/Board-A-Match Teams—*Two chances to win!* .....3:00 pm  
(0-300, 300-1250, 1250+ MPs—Average points) A, B, C played in stratified pairs game. At the same time, each pair is teamed according to masterpoints for a BAM.

### **Sunday, October 2—Including lunch!**

Bracketed Swiss Teams (by average points) (*7 rounds of 7 boards*) ...10:00 am

**Entry Fees:** \$10 per person per session; \$88 (*includes lunch*) per Swiss Team  
\$3 additional/person/session for non or unpaid ACBL members

#### **Tournament Chair**

**Jane Farthing:** [jane.farthing@gmail.com](mailto:jane.farthing@gmail.com), 703-850-9635

#### **Partnership Chair**

**Ron Alldaffer:** [ralldaffer@charter.net](mailto:ralldaffer@charter.net), 757-279-0230

***Williamsburg Hospitality!***

**Directions:** I-64 to Rte. 199, exit 242A (Busch Gardens). Turn right onto Rt. 60 East, turn right into Kingsmill on the James, the DoubleTree is on the right.



# 86<sup>th</sup> Annual D.C. CHAMPIONSHIPS

at the **MARGARET SCHWEINHAUT SENIOR CENTER**  
1000 Forest Glen Rd, Silver Spring, MD **Friday-Sunday only**

## THURSDAY, OCTOBER 6

- ♣ StrataFlighted A/X (unlim/2000) & B/C/D (1000/500/300) Pairs .....11:15 am  
**Rockville Duplicate Bridge Club**, 301-503-3348 (Mark Lavine) **NO ENTRY TILL 11AM**  
*St. James Episcopal Church, 11815 Seven Locks Rd., Rockville*
- ♦ StrataFlighted A/X (unlim/3000) & B/C (2000/750) Pairs (both sites), Intermediate/Novice Pairs (500/300/100) & 0-20 Pairs (Ohr Kodesh only) & Stratified 199er Swiss Teams (Beth El only)  
**Beth El Congregation**, 3830 Seminary Rd, Alexandria .....7:00pm  
**Ohr Kodesh Congregation**, 8300 Meadowbrook Ln., Chevy Chase .....7:30pm  
I-495 to Connecticut Ave. S. 4<sup>th</sup> light left E-W Hwy 410. Left Meadowbrook Ln. 1<sup>st</sup> left Freyman Dr. Parking lot on left. No outside food allowed.

## FRIDAY, OCTOBER 7


- ♣ \*StrataFlighted A/X (unlim/3000) & B/C Pairs (2000/750) (single sessions) .....10:00am, 2:00pm
- ♦ **Stratified Triple Nickel Swiss Teams** (unlim/2000/750) ... **Post-Game Party!** ....7:30pm  
—5 rounds, 5 boards a round, 5 minutes a board. **with beer, wine & desserts**
- ♠ Intermediate/Novice Pairs (500/300/100) & 49er Pairs (50/20/5) (single sessions) 10am, 2pm, 7:30pm

**Win upgraded (more) masterpoints today!**  
**\$1 additional fee supports Grass Roots events.**

## SATURDAY, OCTOBER 8

- ♣ \*StrataFlighted A/X (unlim/3000) & B/C Pairs (2000/750) (single sessions) .....10:00am, 3:00pm
- ♦ Intermediate/Novice Pairs (500/300/100) & 49er Pairs (50/20/5) (single sessions) 10:00am, 3:00pm
- ♥ **Machlin Sportsmanship Award** Presentation & **Panel Show** .....between sessions

## SUNDAY, OCTOBER 9

- ♠ **Eynon Trophy**  **—Lunch available for purchase—**  
*First awarded in 1931— Try to add your name to the famous names inscribed here!*  
Flights A/X (unlim/5000) Eynon Trophy Swiss Teams (2 session playthrough w/break) 11:00am & TBA
- ♣ Bracketed Flight B Teams (no single player >3000) (2 session playthrough w/break) 11:00am & TBA  
B Teams Bracketed by total team masterpoints; three overall places in each.
- ♦ 300/100/50 Swiss Teams, VPs (single sessions) .....11:00am, 3:00pm

### ♣ Lots of Intermediate & Novice Events with Silver Points! ♥

Separate I/N events & strata as advertised as attendance allows. (Director's discretion.)

Hospitality includes snacks, drinks, & **Friday lunch & evening party.** Sunday lunch available for purchase.  
**Tournament Chair: Brad Theurer**, 301-527-8819, [batheurer256@gmail.com](mailto:batheurer256@gmail.com); **Hospitality Manager: Mike Zane**; **Volunteer Coordinator: Barbara Summers**, 301-598-5838, [jimbarb1184@aol.com](mailto:jimbarb1184@aol.com); **Partnerships: Barbara Doran**, 301-608-0347, [barb.doran@verizon.net](mailto:barb.doran@verizon.net), **Online Partnership Desk** available.

\*StrataFlighted if attendance warrants—otherwise combined into Stratified Pairs (unlim/2000/500) Stratification by avg. masterpoints of the team or pair. No individual may exceed the event's upper limit.

**Directions to the Margaret Schweinhaut Senior Center**, 1000 Forest Glen Rd, Silver Spring, MD: I-495 to Georgia Avenue North (toward Wheaton). 1<sup>st</sup> light right on Forest Glen Rd. The Center is .7 mile on right.

## Reno Report, cont. from p 11

in national events in Reno, coming in 4<sup>th</sup> in the NABC Fast Pairs, and 8<sup>th</sup> in the NABC Rockwell Mixed Pairs, the latter with former D6 resident, Jeff Roman. Fred King distinguished himself, placing 5<sup>th</sup> in the NABC IMP Pairs with his frequent D7 partner Dan Fowler. D6 also did well in the Flight B and C NAPs national finals, with Steve Bunning and José Cortina coming in 15<sup>th</sup> in Flight B and Terry Klein and Charles Dearoff coming in 5<sup>th</sup> in Flight C. *For a complete list of those who did well at the Reno NABC, please see page 8 of this issue of TableTALK.*

## Reno as a Tournament Venue

Reviews were mixed with smoke-filled casinos contributing to player discomfort. Not only did players have to pass through the casinos to get to the three hotel playing sites, but smoke often filtered through the hotel ventilation systems into some of the playing areas (notably those downstairs in Circus Circus) as well. Even the one excellent playing site—the Convention Center—could not be accessed except by traipsing through the hotel casinos in order to get there, unless one chose a much more circuitous and lengthy route outside. Attendance fell slightly short (5%) of 12,000 tables projected (compared to the 13,500

## DISTRICT 6 STAC

(Sectional Tournament at Clubs)

**Nov 7-13 & Dec 12-18,  
2016 & Jan 10-16, 2017**

- ♣ Win sectionally rated silver points at your favorite local clubs.
- ♣ Huge overall masterpoint awards ; the more tables in play during any one session, the greater the awards.
- ♣ Clubs in MD, VA, and DE participate. Call any club for details, including entry fees and partnership arrangements.
- ♣ **District 6 STaC Coordinator:**

**Don Berman**  
[don.berman@verizon.net](mailto:don.berman@verizon.net)

**SPACIOUS PLAYING AREA – AMPLE PARKING – FAMOUS HOSPITALITY**

*Separate Friendly Bridge 0-300 games on both  
Friday and Saturday*

**Clarion Hotel Central**

3207 North Boulevard, Richmond, VA 23230

Special Bridge Rate: \$59.00

Call 804-359-9441 for reservations

**FRIDAY, OCTOBER 14**

*Newcomer Lecture* . . . . .9:30 AM  
RBA Friendly Bridge 0-300 game . . .10:30 AM / 3:00 PM  
Stratified Open Pairs (750/2000/2000+) . . . . .10:30 AM  
Stratified Open Pairs (750/2000/2000+) . . . . .3:00 PM

**SATURDAY, OCTOBER 15**

*Newcomer Lecture* . . . . .9:30 AM  
RBA Friendly Bridge 0-300 game . . . . .10:30 AM  
Stratified Open Pairs (750/2000/2000+) . . . . .10:30 AM  
Bracketed Pairs/Board-a-Match Teams . . . . .3:00 PM  
*A, B, and C play in sectional pairs game. At the  
same time, each pair is teamed according to MP  
(highest to lowest). Two chances to win!!*

**SUNDAY, OCTOBER 16**

*Free coffee, bagels and donuts at 9:30 AM*  
Bracketed Swiss Teams . . . . .10:30 AM  
8 teams in each bracket, seven rounds, play through,  
lunch provided

**DIRECTIONS:** From North and West of Richmond: Take I-95-South to Exit 78/Boulevard, get in left side lane at bottom of exit ramp, turn Left onto N. Boulevard, Hotel is immediately on the right. From South and East of Richmond: Take I-95-North to Exit 78/Boulevard, get in right side lane at bottom of exit ramp, turn Right onto Hermitage Road, Hotel's rear entrance is immediately on the left.



**FAMOUS RICHMOND  
HOSPITALITY**

Free coffee, snacks  
and soda available  
each session

**TOURNAMENT  
CHAIRS**

Barry & Winnie Fratkin  
fratco@mac.com  
804-741-6782 (H)  
804-837-6782 (C)

**PARTNERSHIP  
CHAIR**

Anne Atwood  
bsaintsd@aol.com,  
804-784-2654

estimated for DC this summer) as some players left early. It seems evident that we cannot contract with this hotel/playing site configuration again in Reno unless this problem can be solved—unlikely in a casino town. However, Reno is an attractive venue overall with low room rates, good food at low prices, and a convention center with some of the best playing space I have ever seen, so it will be a challenge to see if Management and the BOD can find a way to return to the “Biggest Little City in the World.”

**Key Actions in Reno**

President Ken Monzingo started our year by recognizing that the difficult decisions facing this year's ACBL BOD deserve significant blocks of time set aside at each of our three meetings for in-depth discussion of specific issues that can impact the success or failure of our Strategic Plan. The strategic priorities that formed the basis of our initial Plan three years ago were revisited by the BOD in Reno and re-prioritized in an updated Strategic Plan to: 1. Increase membership acquisition and retention; 2. Develop and accelerate tournament director training and recruitment; 3. Build the confidence of ACBL members through dealing effectively with cheating and maintaining financial health; and 4. Upgrade technology and secure our infrastructure while establishing the future architecture of ACBL Score. As part of this re-prioritization and in support of it, issues discussed in-depth in Reno included Finance, Technology, Strategic Planning in general, and ACBL's commitment to International Bridge, with Finance, Technology, Strategic, and International along with Board Composition to be the focus in DC. Many of the committees established for this year—most notably perhaps the Committee concerned with Board Restructuring/Composition—plus actions coming out of the Reno meetings reflect the fruits of open over motion-driven discussion that can effect real change in organizational structure, membership recruitment, technology, and advances to encourage ethics and confront cheating. Brief summaries of key actions, in no particular order, are below:

•**Finances:** —The 2016 budget, conditionally

## Delmarva I/N Sectional

~MAC SENIOR CENTER~  
909 Progress Circle Ste 100  
Salisbury, MD 21804

*f* **riday October 14**

~Intermediate-Novice Pairs

I/N Stratified Pairs . . . . . 10:00 AM & 3:00 PM  
0-50/50-100/100-500 (single sessions)

*S* **aturday October 15**

~Intermediate-Novice Pairs

I/N Stratified Pairs . . . . . 10:00 AM & 3:00 PM  
0-50/50-100/100-500 (single sessions)

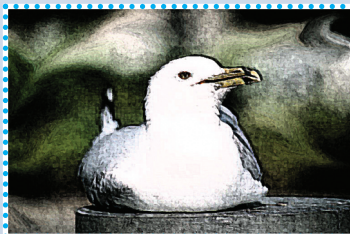
### Eastern Shore Hospitality

~Morning coffee and tea; afternoon snacks  
~Light lunch between sessions available

### Co-Chairs: DEE HUNTER & KIM KVALNES

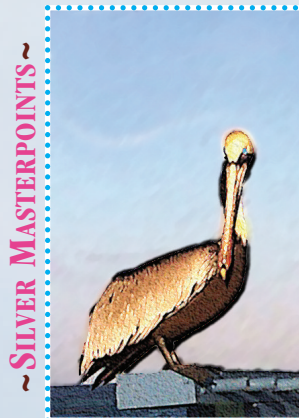
410-749-0497, [deehunter@comcast.net](mailto:deehunter@comcast.net)  
410-228-7061, [kimruth1@comcast.net](mailto:kimruth1@comcast.net)

**Directions:** ~From the Salisbury Bypass, exit North onto Snow Hill Road (Rt.12). Proceed for one mile and turn left at the Salisbury Wicomico Senior Center sign onto Progress Circle. Proceed to the tall maroon sign for Harry & Janette Weinberg



Building Turn right, then keep to the left, park, and enter the building with columns.

~From Route 13, turn onto College Avenue (West), then turn right onto Snow Hill Road. The Senior Center will be shortly on your right. Turn onto Progress Circle.



## **District 7 Sectional Abingdon, VA OCTOBER 14-16, 2016**

**ABINGDON  
SENIOR CENTER**  
300 Senior Drive  
276-628-5859

**Directions:** From I-81 take Exit 17, turn north onto Cummings Street for 0.8 mile, one block beyond Main Street. Turn right onto Valley Street for 0.7 mile. Turn left onto Whites Mill Road for one long block. Turn right onto Summers Street for one block. Turn right on Senior Drive.

### Schedule:

#### **FRIDAY - OCTOBER 14**

Open Pairs and 299er Pairs  
Single sessions: 1pm & 7pm

#### **SATURDAY - OCTOBER 15**

Open Pairs and 299er Pairs  
Single sessions: 10am & 2pm  
Finishes in time for Barter Theatre

#### **SUNDAY - OCTOBER 16**

Open Swiss Teams (masterpoints averaged and stratified)  
2 sessions: 10am & tba

### Tournament Chair

*Nancy Metcalf*  
276-628-6287  
[metcalf12@embarqmail.com](mailto:metcalf12@embarqmail.com)

**Hospitality:** Homemade goodies & snacks. Luncheon included each day.

**Stratifications:** 299er: 50/200/300;  
Open: 750/2000/2000 +



*Fall  
into  
Fun!*

## NVBA FALL SECTIONAL TOURNAMENT

The Arlington/Fairfax Elks Lodge #2188  
8421 Arlington Boulevard,  
Fairfax, VA; 703-560-2213

### THURSDAY, OCTOBER 20

STRATIFIED OPEN PAIRS (2000+/2000/750) or 500/300/100 PAIRS .....10:30 a.m.

*Norma's Game: K of C Hall, 5115 Little Falls Rd., Arlington, VA, 703-892-1292*

*Evening games at: NVBA: Beth El Hebrew Congregation, 3830 Seminary Road, Alexandria, VA or  
WBL: Ohr Kodesh Congregation, 8300 Meadowbrook Ln, Chevy Chase, MD* **NVBA (Beth El) WBL**

*Intermediate/Newcomer Lecture* .....6:30 p.m.

STRATAFLIGHTED OPEN PAIRS (A/X=3000+/3000; B/C=2000/750) .....7:00 p.m. 7:30 p.m.

NVBA 199ER SWISS TEAMS (200/100/50/20); WBL NLM PAIRS (NLM/100/50) 7:00 p.m. 7:30 p.m.

### FRIDAY, OCTOBER 21

*Gene's Friday Morning Game at KOCH:* .....9:30 a.m.

STRATIFIED OPEN (2000+/2000/750) or 500/300/100 PAIRS (NLMs only)

**...REST OF TOURNAMENT AT ELKS LODGE...**

*Intermediate/Newcomer Lecture* .....1:15 p.m.

STRATAFLIGHTED A/X (3000+/3000) or B/C (2000/750) PAIRS 2 p.m.

I/N (500/300/100) or 49ER (50/20/5) PAIRS .....2 p.m.

TRIPLE NICKEL SWISS—5 rounds, 5 boards, 5 minutes a board .7:30 p.m.

I/N (500/300/100) PAIRS .....7:30 p.m.

### SATURDAY, OCTOBER 22

STRATAFLIGHTED A/X (3000+/3000) or B/C (2000/750) PAIRS 9:30 a.m.

I/N (500/300/100), 49ER (50/20) or NEWCOMER (0-5) PAIRS .9:30 a.m.

*Intermediate/Newcomer Lecture* .....1:15 p.m.

**\*\*ALL events on Sat. afternoon & evening award REGIONALLY RATED**

**SILVER POINTS**—an additional \$1 will be added to your entry fee to support Grass Roots events in our local area!—Details at [www.nvba.org](http://www.nvba.org).\*\*

STRATAFLIGHTED A/X (3000+/3000) or B/C (2000/750) PAIRS .2 p.m.

I/N (500/300/100) or 49ER (50/20/5) PAIRS .....2 p.m.

STRATIFIED OPEN (2000+/2000/750) or I/N (500/300/100) PAIRS 7:30 p.m.

### SUNDAY, OCTOBER 23

FLIGHTS A/X (5000+/5000) SWISS TEAMS .....11 a.m. & TBA

BRACKETED FLIGHT B TEAMS (no single player >2500) .11 a.m. & TBA

*B Teams Bracketed by Total Team Masterpoints: three overall places in each.*

*A/X Swiss & B/C Teams: 2-session events, a brief break & food available on-site.*

I/N (500/300/100) SWISS TEAMS (Single sessions) .11 a.m. / 3:15 p.m.

49ER (50/20/5) SWISS TEAMS (Single session) .....11 a.m.

**STRATIFICATION** of events is based on average masterpoints of the team or pair. In any event or flight with an upper limit, no individual's total Masterpoint holding may exceed that upper limit.

**DIRECTIONS:** From Route 50/Arlington Boulevard heading west from DC and Arlington AND from Route 495/Beltway: Continue on/Take Route 50 West about one mile outside the Beltway, and turn left at Javier Road (the second stoplight after the intersection of 50 and 495). Take an immediate right onto the access road that runs parallel to Route 50. The Elks Lodge will be two buildings down on your left—parking on the side and in the rear. From Fairfax, heading East on Route 50: Pass the intersection of Route 50 and Prosperity Avenue—the Prosperity Medical Center will be on your right. Between the first and second lights after Prosperity, turn right into the access road that runs parallel to Route 50 and look for the Elks Lodge immediately to your right—parking on the far side of the building and in the rear.

approved last fall but requiring final approval this spring, was carefully reviewed and slashed to get from a \$60,000 deficit to approximately a \$100,000 excess of revenues over expenditures, again representing BOD commitment to reducing unnecessary expenses and focusing finances on projects that will help move the ACBL forward in concert with its strategic goals. —Some actions will be ongoing while smaller steps are being taken at every meeting. Example: In Reno, the President's budget was significantly reduced by substantially cutting travel to attend meetings at regionals, sectionals, and world or zonal competitions outside Zone 2 (Canada, Mexico and the US) and social activities in the President's Suite, including players from throughout ACBL. Additionally, an annual reduction of \$15,000 was achieved by BOD action that revised the way that the key NABC Host Committee Volunteers are honored by Management and the BOD. Volunteers are still the recipients of appropriate appreciation (e.g., discounted entry fees, a suite in which to relax between shifts attending to player needs) but the large-attendance (often 100 folks) Volunteer Dinner the night before the start of an NABC is now a thing of the past. —The desire to project annual expenses accurately given a number of uncapped commitments in our current regulations resulted in actions detailed in the following two bullets.

#### • Cooperative Advertising Reimbursements:

—Prior to Reno, ACBL covered 75% of eligible advertising expenses incurred by teachers, clubs, units and districts for date-specific programs and lessons designed for beginners/newcomers and/or to recruit ACBL members, with a ceiling per program of \$500. Following an almost unanimous vote in Reno, Cooperative Advertising Program (CAP) reimbursements will be funded at 50% and still with the \$500 per-program ceiling. This action helps reduce the total amount of expense that is completely unpredictable at the time an annual budget is set, while still offering generous support to Member entities.

#### • School Bridge Programs:

In a move similar to reducing the high uncertain costs of CAP expenditures, the BOD voted unanimously to

*Plenty of free  
snack bar plus lots of free  
treats! Many great  
restaurants nearby!*

*Championship Events  
and a Full Schedule of  
299er Events for Novice and  
Intermediate Players!*

*Players with 0-5 Masterpoints  
play FREE in ALL games!*

#### Tournament Chair

*Margot Hennings,  
703-560-0245*

#### Partnership Chair

*Marty Bley  
nvbapartnerships@gmail.com  
571.789.8338 (C)*

*Mid-Chart Conventions  
permitted in all A/X Events*

**Next NVBA Sectional  
Feb 16-19 2017 at Arlington/  
Fairfax Elks Lodge  
(Thurs at Beth El)**

[www.nvba.org](http://www.nvba.org)

## Shenandoah Valley Winter Sectional



### Cavalier Inn at the University

105 N. Emmett St. (Corner  
Rt. 29/Rt.250 Business)  
Charlottesville, VA 22903

**Directions** From I-64,  
Exit 118B (29 bypass); then  
exit on Rt. 250 Business;  
turn right. The hotel is one  
mile on the left. Free under-  
ground parking is available.

### Reservations

434-296-8111;  
888-882-2129 (toll-free)

Non-Smoking  
Tournament with  
Hospitality Breaks

Free coffee, soft drinks,  
and more ...

### Entries

\$10.00/person  
for pair games;  
\$96.00/team—Includes  
light lunch between  
sessions; \$3 additional  
per person for non or  
unpaid ACBL members

### Tournament Chairs

**Betsy Ruehl**  
540-942-3667  
etruehl@ntelos.net

**Steve Rothman**  
434-296-1714

## SCHEDULE OF EVENTS

### FRIDAY, DECEMBER 9

10:30 AM . . .Open Stratified Pairs or 199er Pairs  
The entry for these games is \$11. 40% more master-  
points awarded helps fund the GNTs & NAPs

3:30 PM . . .Open Stratified Pairs or 199er Pairs

### SATURDAY, DECEMBER 10

10:30 AM . . .Open Stratified Pairs or 199er Pairs  
The entry for these games is \$11. 40% more master-  
points awarded helps fund the GNTs & NAPs

3:30 PM . . .Open Stratified Pairs or 199er Pairs

### Friday and Saturday Stratification Limits

0-750, 750-2000, 2000+ (199er at Director's discretion)  
Stratification of pairs by average masterpoints. —No indi-  
vidual may exceed the event's upper limit.

### SUNDAY, DECEMBER 11

10:30 AM & TBA . . . . .Bracketed Swiss Teams  
8 teams in each bracket, 7 rounds, play-through

better define the guidelines under which ACBL will support/provide materials to School Bridge Programs: 1. Students must be younger than 26; 2. High school graduates must be enrolled full time at a two-year or four-year college; 3. It is recommended that classes have at least 12 students, but they must have a minimum of four; and 4. Students may not be charged for a teacher's time.

•**Effectiveness:** The aforementioned Board Restructuring Committee with members from Management, the BOD, the Board of Governors (BOG), and at-large (including Daniel Korbel of D6) is looking at ways to increase the effectiveness of the BOD. This Committee was created in Denver last fall and wide-ranging suggestions are being entertained in an effort to find “a better way” to meet our organization's daily needs as well as its strategic goals—should the Board be smaller, should it comprise distinct skills needed by the League (e.g., legal, technology, tournament experience, club representation) in lieu of geographic representation? How big or small a Board is needed? How will Board members be elected? What mechanism can be developed that will allow the current districts to voice their concerns if geographic representation is eliminated?

•**Encouragement of Newcomers and Social Bridge Players:** For a separate stand-alone “newcomer game” for players with fewer than 20 masterpoints, players may now ask for advice, refer to notes, and have help on any hand. This game is intended to acquaint new players with duplicate bridge and to encourage participation by inexperienced and/or social bridge players. Teachers, club managers and administrators of programs such as *Learn Bridge in a Day?* or *EasyBridge!* should find this a perfect enticement or follow-on to lessons for players uncertain about entering the world of duplicate bridge.

•**NABC Events:** At the request of the non-BOD Competition and Conventions Committee (C&C), the BOD entertained a motion to create yet another 7-day KO during the Fall NABC, so that there would be consistency in the scheduling across all NABCs—there are already NABC+ KOs starting on Monday in the

Spring (the Vanderbilt) and the Summer (the Spingold). Many unanswered questions remained as to how such a new event would impact existing events in the Fall, such as the first weekend's two-day NABC+ pair event and the Open Board-a-Match Teams (BAM), the mid-week three-day Blue Ribbon Pairs, and the three-day Reisinger BAM on the final weekend, so voting on this recommendation was deferred until DC.

• **Cheating:** A number of high-profile hearings scheduled to be held by the ACBL Ethical Oversight Committee (EOC, current composition listed on the ACBL website) were postponed at the request of the defendants. In the interim, decisions as to guilt and penalties imposed have been taken by the defendants' cognizant National Bridge Organizations (NBOs) and/or the World Bridge Federation, all of which will be taken into consideration when these cases are heard by EOC and reviewed by the Appeals and Charges Committee (A&C, of which I am a member) later this year.

• **Legal Services, Standards, and Policy:** Based on the recommendation of the Legal Services Review Committee, the position of League Counsel was eliminated and a full-time in-house Legal Counsel, Linda Dunn, was hired after extensive search and interviews of highly capable applicants.

Although it sounds semantic, prompted by the many international cheating scandals, the standard of proof in cases involving severe discipline was changed from "preponderance of the evidence" to "comfortable satisfaction."

And, in a major change of policy, attorneys, never before permitted to represent their clients at hearings, will now be permitted in A&C hearings, but not in Unit or District hearings.

• **Player Appeals Committees:** "ACBL Tournament Directors will now hear and rule on all appeals for NABC+ events at NABCs. All Conduct and Ethics or Disciplinary matters shall continue to be referred to and heard by the NABC Tournament Committee or to its assignees." This process has been in place at Regionals and for non-NABC+ events at NABCs for well over a decade. Prior to the narrow passage of this new regulation (14-11 with one abstention and one absent), NABC+

WASHINGTONBRIDGELEAGUE.ORG

Mid-chart allowed in all events except I/N & Triple Nickel

♣ Silver Spring, MD ♦ JANUARY 5-8, 2017 ♥

**55<sup>th</sup> Annual**

**~ PRESIDENTIAL TOURNAMENT ~**  
at the **MARGARET SCHWEINHAUT SENIOR CENTER**  
1000 Forest Glen Rd, Silver Spring, MD **(Friday-Sunday only)**



**2017...**  
*Cheers to a New Year & a New Deal!*

**THURSDAY, JANUARY 5**

- ♣ StrataFlighted A/X (unlim/2000) & B/C/D (1000/500/300) Pairs . . . 11:15am  
**Rockville Duplicate Bridge Club, 301-503-3348** (Mark Lavine) **NO ENTRY TILL 11AM**  
*St. James Episcopal Church, 11815 Seven Locks Rd., Rockville*
- ♦ StrataFlighted A/X (unlim/3000) & B/C (2000/750) Pairs (both sites), Intermediate/Novice Pairs (500/300/100) & 0-20 Pairs (Ohr Kodesh only) & Stratified 199er Swiss Teams (Beth El only)  
**Beth El Congregation, 3830 Seminary Rd, Alexandria . . . . . 7:00pm**  
**Ohr Kodesh Congregation, 8300 Meadowbrook Ln., Chevy Chase 7:30pm**  
I-495 to Connecticut Ave. S. 4<sup>th</sup> light left E-W Hwy 410. Left Meadowbrook Ln. 1<sup>st</sup> left Freyman Dr. Parking lot on left. **No outside food allowed.**

**FRIDAY, JANUARY 6**

- ♣ \*StrataFlighted A/X (unlim/3000) & B/C Pairs (2000/750) (single sessions) . . . . . 10:00am, 2:00pm
- ♦ **Stratified Triple Nickel Swiss Teams** (unlim/2000/750) . . . . . **Post-Game Party!** . . . . 7:30pm  
—5 rounds, 5 boards a round, 5 minutes a board. **with beer, wine & desserts**
- ▲ Intermediate/Novice Pairs (500/300/100) & 49er Pairs (50/20/5) (single sessions) . . 10am, 2pm, 7:30pm

**Panel Show & Party** **SATURDAY, JANUARY 7**  
**to Honor New Life Masters between sessions**

**Win upgraded (more) masterpoints today! \$1 additional fee supports Grass Roots events.**

- ♣ \*StrataFlighted A/X (unlim/3000) & B/C Pairs (2000/750) (single sessions) . . . . . 10:00am, 3:00pm
- ♦ Intermediate/Novice Pairs (500/300/100) & 49er Pairs (50/20/5) (single sessions) . . . . . 10:00am, 3:00pm

**SUNDAY, JANUARY 8**

**WBL Trophy Race Winners' Presentation** —Lunch available for purchase—

- ▲ Flights A/X (unlim/5000) Swiss Teams (2 session playthrough w/break) . . . . . 11:00am & TBA
- ♣ Bracketed Flight B Teams (no single player >3000) (2 session playthrough w/break) . . 11:00am & TBA  
B Teams Bracketed by total team masterpoints; three overall places in each.
- ♦ 300/100/50 Swiss Teams, VPs (single sessions) . . . . . 11:00am, 3:00pm

**♣ Lots of Intermediate & Novice Events with Silver Points! ♥**

Separate I/N events & strata as advertised as attendance allows. (Director's discretion.)

Hospitality includes snacks, drinks, & **Friday lunch & evening party.** Sunday lunch available for purchase.  
**Tournament Chair: Brad Theurer, 301-527-8819, batheurer256@gmail.com; Hospitality Manager: Mike Zane; Volunteer Coordinator: Barbara Summers, 301-598-5838, jimbarb1184@aol.com; Partnerships: Barbara Doran, 301-608-0347, barb.doran@verizon.net, Online Partnership Desk available.**

\*StrataFlighted if attendance warrants—otherwise combined into Stratified Pairs (unlim/2000/500) Stratification by avg. masterpoints of the team or pair. No individual may exceed the event's upper limit.

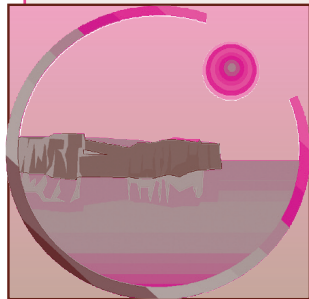
**Directions to the Margaret Schweinhaut Senior Center, 1000 Forest Glen Rd, Silver Spring, MD: I-495 to Georgia Avenue North (toward Wheaton). 1<sup>st</sup> light right on Forest Glen Rd. The Center is .7 mile on right.**

# Norfolk/ Virginia Beach Winter Sectional

Unit 146 Bridge Center

4966 Euclid Road, Virginia Beach, VA 23462

—Stratification based on partnership/team average—



**Directions:** Take North Witchduck exit off I-264. After 4/10 mile, turn right onto Cleveland Street. After 3/10 mile, turn diagonally right on Euclid Road. The Bridge Center is at 4966 Euclid Road, 3/10 mile on the left, in the U-shaped Pocahontas Office Park.

**Nearby Hotels:** **Hampton Inn**, 5793 Greenwich Road, Virginia Beach, 757-490-9800  
**Motel 6**, 4760 Euclid Road, Virginia Beach, 757-499-1935

**Fri & Sat PM games regionally rated—extra points, no extra money.**

## **Friday, January 6**

*(Light lunch served between sessions)*

Stratified Pairs (single sessions) . . . . .10:30 AM & 2:30 PM  
(0-750, 750-1500, 1500+ MPs)  
Novice Pairs (single sessions) . . .10:30 AM & 2:30 PM  
(0-100, 100-200, 200-NLM up to 500)

## **Saturday, January 7**

*(Light lunch served between sessions)*

Stratified Pairs (0-750, 750-1500, 1500+ MPs) 10:30 AM  
Novice Pairs . . . . .10:30 AM  
(0-100, 100-200, 200-NLM up to 500)  
Bracketed Pairs/Board-A-Match Teams . . . . .2:30 PM  
(Play in a stratified pairs game. At the same time, each pair is teamed according to MP (highest to lowest). *Two chances to win!*)

## **Sunday, January 8**

Stratified Swiss Teams (0-750, 750-1500, 1500+ MPs) . . . . .10:30 AM & TBA  
Novice Stratified Swiss Teams (0-100, 100-200, 200-NLM up to 500) . . .10:30 AM & TBA

**Entries:** \$10 per person per pairs session; \$84 per team (includes meal between sessions for 4 team members). Additional \$3 for unpaid or non-ACBL members.

**Great Hospitality:** Includes free snacks, sodas and coffee for all events.

— Strata may be adjusted at director's discretion based on attendance—

### **Tournament Chair**

**Susan Chambers**  
chamberssa@yahoo.com  
702-683-2463

### **Partnership Chair**

**Joe Siqueira**  
joesiqueira@hotmail.com  
757-544-6535

appeals were heard by Committees composed of expert players. With good arguments on both sides—those favoring rulings by players versus those favoring rulings by Directors—from world-class players, this is the third time in the past ten years this proposal has been made—the third time being the charm. The “correctness” of these rulings will be monitored closely by reviewing them after-the-fact, and also including input from expert players before the final ruling is made.

### **Motions for Consideration in DC**

As noted above, I can only guess at the outcome of the numerous changes to ACBL regulations that might be forthcoming (or have happened by the time you read this) from the meetings in DC. What I can do with conviction is detail the categories and some specifics of the motions that I know will be considered even if their outcome is unknown:

**NABC Event Entry:** Clarification of ability of players who have suspension hearings pending with their own disciplinary bodies to participate in ACBL events or to partner with known co-conspirators.

**NT Openers:** By partnership agreement, a notrump opening or overcall is natural if it contains no void, at most one singleton, which must be the Ace, King, or Queen and no more than two doubletons. This is in addition to other existing regulations governing NT openings.

**Player Recruitment:** Creation of a Player Recruitment Task Force that would include the ACBL Director of Marketing and two club owners as non-voting members.

**Electronic Participation in Regionals and Sectionals:** Furthering the progress made with a Phase I “electronic section” on June 6 at the Tampa Regional with clubs in NC, NY, and FL participating through Bridge Base Online, ACBL would like to conduct a Phase II electronic horizontal two-session Gold Rush Pairs event at the PGA Regional in FL on August 23 and 24 with clubs in NC, NY, and FL again participating.

**Conditions of Contest:** For the 2016/17 Collegiate Bridge Bowl, reinstating the eight-team face-to-face final at the Summer NABC; changing the methodology for team matchups

**SPACIOUS PLAYING AREA – AMPLE PARKING – FAMOUS HOSPITALITY**

*Separate Friendly Bridge 0-300 games on both  
Friday and Saturday*

**Clarion Hotel Central**

3207 North Boulevard, Richmond, VA 23230

Special Bridge Rate: \$59.00

Call 804-359-9441 for reservations



**FRIDAY, JANUARY 20**

*Newcomer Lecture* .....9:30 AM  
RBA Friendly Bridge 0-300 game ...10:30 AM / 3:00 PM  
 Stratified Open Pairs (750/2000/2000+) .....10:30 AM  
 Stratified Open Pairs (750/2000/2000+) .....3:00 PM

**SATURDAY, JANUARY 21**

*Newcomer Lecture* .....9:30 AM  
RBA Friendly Bridge 0-300 game .....10:30 AM  
 Stratified Open Pairs (750/2000/2000+) .....10:30 AM  
 Bracketed Pairs/Board-a-Match Teams .....3:00 PM  
*A, B, and C play in sectional pairs game. At the  
 same time, each pair is teamed according to MP  
 (highest to lowest). Two chances to win!!*

**SUNDAY, JANUARY 22**

*Free coffee, bagels and donuts at 9:30 AM*  
 Bracketed Swiss Teams .....10:30 AM  
 8 teams in each bracket, seven rounds, play through,  
 lunch provided

**DIRECTIONS:** From North and West of Richmond: Take I-95-South to Exit 78/Boulevard, get in left side lane at bottom of exit ramp, turn Left onto N. Boulevard, Hotel is immediately on the right. From South and East of Richmond: Take I-95-North to Exit 78/Boulevard, get in right side lane at bottom of exit ramp, turn Right onto Hermitage Road, Hotel's rear entrance is immediately on the left.

in Women's NABC Team events; requiring 50% participation in each matchup for NABC events in which four-ways are needed; allowing American Bridge Association (ABA) members to play in ACBL Sectionals and Regionals without paying the non-member surcharge; encouraging High School Bridge Championships to be run under existing regulations for Youth and Junior Sectionals and Regionals.

**Tournament Assistant (TA) Accreditation for Work at Sectionals:** In order to work at Sectionals, TAs must pass the TA accreditation exam and be approved by the Director-in-Charge of the tournament. Local Directors may no longer work at Sectionals without having passed the TA accreditation exam.

**Bridge Play Apps for Mobile Devices:** A Feasibility Study requested by the BOG for "capable competent Volunteers" to develop interesting applications for mobile devices as a means to entice younger folks to try their hand at bridge.

**Major Revisions to the Recorder Regulations:** At the recommendation of the Bridge Integrity Task Force, proposed revisions to parallel strides being made by the Anti-Cheating Task Force to both encourage reports of ethical violations and to protect both the reporter and the person allegedly committing the infraction.

**Miscellaneous:**

- Videotaping/live-streaming of BOD and BOG meetings;
- A two-year term for the ACBL President;
- Indemnification of Anti-Cheating Task Force Commissioners;
- Day-long robot tournaments;
- Decrease in cost of Junior Memberships from \$15 to \$5, continuing all current benefits with the exception of a mailed Bulletin—encouraging more school bridge participants to become Members, thereby enabling ACBL to contact them via email.

As always, contact me with any questions at [margot10bridge@cox.net](mailto:margot10bridge@cox.net). Hope to have seen many of you at the DC NABC by the time you read this!

*—Margot*

**FAMOUS RICHMOND  
HOSPITALITY**

Free coffee, snacks  
and soda available  
each session

**TOURNAMENT  
CHAIRS**

Barry & Winnie Fratkin  
[fratco@mac.com](mailto:fratco@mac.com)  
 804-741-6782 (H)  
 804-837-6782 (C)

**PARTNERSHIP  
CHAIR**

Anne Atwood  
[bsaintsd@aol.com](mailto:bsaintsd@aol.com),  
 804-784-2654

The **MARYLAND BRIDGE ASSOCIATION**

presents

# BALTIMORE'S SUPERBOWL WEEKEND

at the

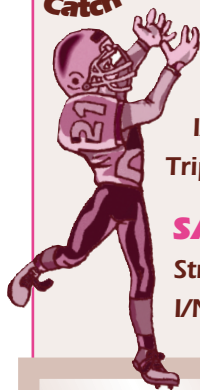
## COMFORT INN - BWI Airport

6921 Baltimore-Annapolis Blvd., Baltimore, MD 21225 ☎ 410-789-9100

**Directions:** from North and South: Baltimore-Washington Parkway (MD Route 295) to Baltimore Beltway East (I-695 toward Glen Burnie). Take the Northbound Camp Meade Road Exit #6A and continue north for 1/2 mile. You can see the Comfort Inn at the next traffic light..

**Our Schedule** .....Including free coffee, soft drinks and refreshments and a Lecture with Game Analysis after the Saturday Morning Game! For the Sunday Swiss, sandwiches are available for purchase (partially subsidized by Maryland Bridge Association)

Catch the Silver!



### FRIDAY, February 3

**Stratified Grass Roots Pairs:** 0-1500/3000/3000+ MPs .....1 pm  
(The entry for this game is \$1 additional, 40% more masterpoints awarded! Helps fund the GNTs and NAPs)

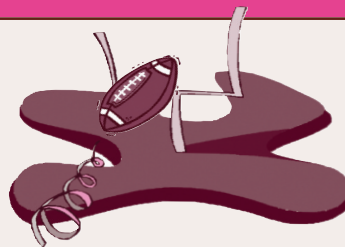
**I/N Stratified Pairs:** 0-200/500/1000 MPs .....1 pm

**Triple Nickel Swiss:** (5 rounds, 5 boards, 5 minutes a board) .....7 pm

### SATURDAY, February 4

**Stratified Pairs:** 0-1500/3000/3000+ MPs (single sessions) ..10 am & 3 pm

**I/N Stratified Pairs:** 0-200/500/1000 MPs (single sessions) ..10 am & 3 pm



Surprises!

#### TOURNAMENT CHAIR

**Renate Conlon**

443-527-4744

[rjconlon@hotmail.com](mailto:rjconlon@hotmail.com)

#### PARTNERSHIPS

**Pat Murty**

410-323-6206

[129firef@comcast.net](mailto:129firef@comcast.net)

### SUNDAY, February 5

**Stratified Swiss Teams** ....10:00 am - Playthru

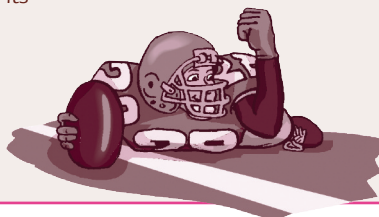
Stratified by average of total MPs

**I/N Swiss Teams** .....10:00 am & 2:00 pm

0-5/20/50 MPs & 100/200/500 MPs

2 single session events

**All Pair Events  
are Single Sessions**



#### The Mid-Atlantic...

Home to the ACBL's premier Regionals — hosting 33,000 tables during this past year. It's time to check your 2016-17 calendar and plan to play in the biggest and best tournaments of

#### .....August, 2016

● **P 3...Aug 15-21 Hunt Valley, MD REGIONAL**

Diane Jaworowsky, 410-461-2083, [DianeJaw@verizon.net](mailto:DianeJaw@verizon.net)

● **P 7...Aug. 27-28 . . . . .Norfolk/VA Beach NLM**

Brian Boyce, 757-412-4925, [brian@bfboyce.com](mailto:brian@bfboyce.com)

● **P 2...Aug 30-Sep5 Atlanta, GA D7 REGIONAL**

Jack Feagin, 404-252-9246, [jfeagin2@bellsouth.net](mailto:jfeagin2@bellsouth.net)

#### .....September, 2016

● **P 8...Sep 8-11 . . . . .Fairfax, VA**

Margot Hennings, 703-560-0245,

[margot10bridge@cox.net](mailto:margot10bridge@cox.net)

● **P 9...Sep 16-18 . . . . .Norfolk/Va Beach**

Brian Boyce, 757-434-0792, [brian@bfboyce.com](mailto:brian@bfboyce.com)

Chris Warnstaff, [cwarnstaff@msn.com](mailto:cwarnstaff@msn.com), 757-348-3188 &

Karen Dickinson, [kjdickinson1@verizon.net](mailto:kjdickinson1@verizon.net), 757-739-2919

**Sep 24-25 . . . . .D6 NAP Finals**

Sylvia Shi , 289-788-0385, [sylviamshi@gmail.com](mailto:sylviamshi@gmail.com)

● **P 10...Sep 30-Oct 2 . . . . .Baltimore, MD**

Renate Conlon, 443-527-4744, [rjconlon@hotmail.com](mailto:rjconlon@hotmail.com)

● **P 11...Sep 30-Oct 2 . . . . .Williamsburg, VA**

Jane Farthing, 703-850-9635, [jane.farthing@gmail.com](mailto:jane.farthing@gmail.com)

#### .....October, 2016

● **P 12...Oct 6-9 . . . . .Silver Spring, MD**

Brad Theurer, 301-527-8819, [batheurer256@gmail.com](mailto:batheurer256@gmail.com)

● **P 13...Oct 14-16 . . . . .Richmond, VA**

Barry and Winnie Fratkin, 804-741-6782 (H) ,

804-837-6782 (C), [fratco@mac.com](mailto:fratco@mac.com)

● **P 14...Oct 14-16 . . . . .D7, Abington, VA**

Nancy Metcalf, 276-628-6287,

[metcalf12@embarqmail.com](mailto:metcalf12@embarqmail.com)

● **P 14...Oct 14-15 . . . . .Salisbury, MD NLM**

Dee Hunter, 410-749-0497, [deehunter@comcast.net](mailto:deehunter@comcast.net)

& Kim Kvalnes, 410-228-7061, [kimruth1@comcast.net](mailto:kimruth1@comcast.net)

the year. Mid-Atlantic regionals offer loads of Bracketed Knockouts, exciting Intermediate/Newcomer schedules and

# 1 Year DISTRICT 6 Calendar OF EVENTS

lectures, and our three favorite words: hospitality, hospitality, hospitality.

## .....October, continued...

- **P 20...Oct 20-23** .....Fairfax, VA  
Margot Hennings, 703-560-0245, margot10bridge@cox.net
- **P 4...Oct 24-30** **Charlotte, NC D7 REGIONAL**  
Arnold Hoffman, 704-875-6923,  
ajhoffmann@carolina.rr.com
- **P 6...Oct 31-Nov 6** .....**D4 REGIONAL**  
John Klinger,  
dhklinger@epix.net  
**Manheim, PA**  
(Lancaster County)

## .....November, 2016

- Nov 7-13** .....**D6 & Unit 190 StAc**  
Don Berman, 301-776-3581, don.berman@verizon.net
- **P 5...Nov 14-20** **Norfolk/Va Beach, VA REGIONAL**  
Brian Boyce, 757-434-0792, brian@bfboyce.com
- Nov 24-Dec 4** . . .**.ORLANDO, FL NATIONALS**  
Fall North American Bridge Championships

## .....December, 2016

- Dec 9-11** .....**Charlottesville, VA**  
Betsy Ruehl, 540-942-3667, etruehl@ntelos.net
- Dec 12-18** .....**D6 & Unit 190 StAc**  
Don Berman, 301-776-3581, don.berman@verizon.net
- Dec 27-Jan 2** **N Charleston, SC D7 REGIONAL**  
Steven Donaldson, 843-412-8097, folliboy@aol.com

## .....January, 2017

- Jan 5-8** .....**Silver Spring, MD**  
Brad Theurer, 301-527-8819, batheurer256@gmail.com
- Jan 6-8** .....**Norfolk/Va Beach**  
Brian Boyce, 757-434-0792, brian@bfboyce.com  
Susan Chambers, 702-683-2463,  
chamberssa@yahoo.com
- Jan 10-16** .....**D6 & Unit 190 StAc**  
Don Berman, 301-776-3581, don.berman@verizon.net
- Jan 20-22** .....**Richmond, VA**  
Barry and Winnie Fratkin, 804-741-6782 (H),  
804-837-6782 (C), fratco@mac.com

## .....January, continued...

- Jan 23-29** . . .**Wilmington, NC D7 REGIONAL**  
Larry Harding, Larry.Harding57@gmail.com
- Jan 28-29** .....**Flight A GNT**  
1st weekend
- .....**February, 2017**
- Feb 3-5** .....**Baltimore, MD**  
Renate Conlon, 443-527-4744, rjconlon@hotmail.com
- Feb 16-19** .....**Fairfax, VA**  
Margot Hennings, 703-560-0245, margot10bridge@cox.net
- Feb 24-26** .....**Williamsburg, VA**  
Jane Farthing, 703-850-9635, jane.farthing@gmail.com
- Feb 20-26** . . .**Asheville, NC D7 REGIONAL**  
Stewart Manning, smanning42@frontier.com

## .....March, 2017

- Mar 4-5** .....**Flights B, C and Open GNT**  
1st weekend
- Mar 9-19** . . .**.KANSAS CITY, MO NATIONALS**  
Spring North American Bridge Championships
- Mar 17-19** .....**Fredericksburg, VA**  
Deborah Hage, 540-659-1321, debhage@hotmail.com
- Mar 24-26** .....**Lynchburg, VA**  
Sara Gilkey, 434-384-8970, salgilkey@aol.com
- Mar 31-Apr 2** .....**Norfolk/Va Beach, VA**  
Kathy Burch, kathy.m.burch@outlook.com

## .....April, 2017

- Apr 6-9** .....**Silver Spring, MD**  
Brad Theurer, 301-527-8819, batheurer256@gmail.com
- Apr 8-9** .....**Flight A GNT**  
2nd weekend
- Apr 17-23** . . .**.Gatlinburg, TN D7 REGIONAL**  
Julia Misslin, 423-884-3550, jupe60@tds.net
- Apr 27-30** .....**Fairfax, VA**  
Margot Hennings, 703-560-0245, margot10bridge@cox.net

## .....May, 2017

- May 5-7** .....**Williamsburg, VA**  
Jane Farthing, 703-850-9635,  
jane.farthing@gmail.com
- May 8-14** .....**D6 & Unit 190 StAc**  
Don Berman, 301-776-3581, don.berman@verizon.net
- May 23-29** . . . . .**Richmond, VA REGIONAL**  
George Lewis, george.lewis@lewisct.com & Jacki  
Shuman, 804-307-4304, richmondregional@aol.com

## .....June, 2017

- Jun 3-4** . . . . .**Flights B, C and Open GNT**  
2nd weekend
- Jun 5-11** . . . . .**Greenville, SC D7 REGIONAL**  
Richard Brown, 864-855-1474, rbbrown100@charter.net
- Jun 9-11** .....**Baltimore, MD**  
Renate Conlon, 443-527-4744, rjconlon@hotmail.com
- Jun 12-18** .....**D6 & Unit 190 StAc**  
Don Berman, 301-776-3581, don.berman@verizon.net
- Jun 19-25** .....**D4 REGIONAL**  
Meyer Kotkin,  
856-986-5109, guymath@comcast.net  
**King of Prussia, PA**
- Jun 23-25** .....**Richmond, VA**  
Barry and Winnie Fratkin, 804-741-6782 (H),  
804-837-6782 (C), fratco@mac.com

## .....July, 2017

- Jul 3-9** .....**Bethesda, MD REGIONAL**  
Marty Bley, 240-441-9885,  
DistrictRegionalbethesda@gmail.com
- Jul 14-16** .....**Virginia Beach, VA**  
Brian Boyce, 757-434-0792, brian@bfboyce.com  
Jack Mallery, jmallery1@verizon.net
- Jul 20-30** . . . . .**TORONTO, ON NATIONALS**  
Summer North American Bridge Championships
- Jul 31-Aug 6** **Columbia, SC D7 REGIONAL**  
Elizabeth Beckwith, elizbeck2011@gmail.com)



## ***2015-16 Grand National Teams — Open, B & C Bracket Winners!***

In the Open Bracket, the number one seed was knocked out early, leaving a wide open field for the rest of the teams. There were many close matches and the winning margin in their final match was only 9 victory points. Congratulations to all of the teams! District 6 looks forward to seeing how you fare at the Summer NABC here in Washington in July.

### **WINNERS: OPEN BRACKET**

- 1 Mark Chen, Noble Shore, Mike Gill, Ai-Tai Lo, Alan Schwartz**
- 2 Donna Rogall, Clyde Kruskal, Sumner Steinfeldt, Hal Hindman
- 3 / 4 —Marty Graf, Mark Shaw, Alan Tenenbaum, David Ruderman  
—Marc Warner, Dewayne Jones, Brad Theurer, Lyle Poe, Mark Dahl, David Butler
- 5 / 8 —Adam Gann, Fred King, Dick Wegman, Robert Gookin  
—Robert Hopkins Jr, Kent Goulding, Rusty Krauss, Barry Falgout, Bob Bell, Lou Reich  
—Linda Marshall, Mary Tenenbaum, David Rodney, Avril Rodney  
—Richard Ferrin, Gene Kales, Ellen Cherniavsky, Robin Taylor

### **WINNERS: B BRACKET (0-2500)**

- 1 Bob Burgess, Jian-Pian Chen, Leah Shao, Owen Byer**
- 2 Walter Smith Jr, Albert Lauber, Jay Cherlow, Ned Griffith, Hadi Abushakra, James Beller
- 3 / 4 —Mel Yudkin, Kiyomi Shiba, Debnarayan Dhar, Eugene Fisher, Jeffrey Kosnett  
—Wiltold Palosz, Jeff Halle, Dale Sanders, Terry Klein

### **WINNERS: C BRACKET (0-500 NLM)**

In the C Bracket, again we had a very close match between the Southern and Northern site teams.

- 1 Rick Bingham, Jim Metzger, Mike Corrigan, Jeff Yutzler**
- 2 Forrest Swope, Chris McCrae, Morgan McLeod, Alice Faintich